



www.TopBestSolar.com

GUANH
冠煌
— SOLAR ENERGY —



TopBestSolar.com

TopBestSolar.com



Solar Mounting System Factory

Tel : +86-592-5900866

Fax : +86-592-5900266

Mob : +86-183-592-60008

info@TopBestSolar.com

www.TopBestSolar.com

WEB



WHATSAPP



E-NAMECARD



XIAMEN TOP BEST TECH CO.,LTD



GUANHUANG GROUP

XIAMEN TOP BEST TECH CO.,LTD

Hebei Guanhuang New Energy Tech Co., LTD

Quanzhou Caiguang New Energy Tech Co., LTD

Fujian Guanhuang Wisdom Energy Co., LTD

Xiamen Guanhuang Industry and Trade Co., LTD

Handan Guanhuang New Material Tech Co., LTD

COMPANY FACTORY



CONTENTS

ABOUT US 01

Roof Mounting

Tile Roof Mounting 03

- I - Stainless Steel Hook Series 03
- II - Aluminum Hook Series 05
- III - ZAM Steel Hook Series 10

Metal Roof Mounting 11

- I - Short Rail Series 11
- II - L Feet Series 19
- III - Corrugated Roof Clamp Series 21
- IV - Trapezoidal Roof Clamp Series 25
- V - Adjustable Leg Series 27

Balcony Mounting 29

- I - Aluminum Balcony Mounting 29
- II - Adjustable Balcony Mounting 31

Flat Roof Mounting 33

- I - Adjustable Ballast Series 33
- II - Railless Ballast Series 35
- III - ZAM Steel Mounting Series 37
- IV - Triangle Mounting Series 39
- V - Elevation Mounting Series 41

Solar Waterproof Mounting 43

- I - ZAM Steel Waterproof Mounting 45
- II - Aluminum Waterproof Mounting 47
- III - Waterproof Commercial Plant 49

Ground Mounting 51

- I - Pole Mounting Series 51
- II - Single Post Series 53
- III - Aluminum Mounting Series 55
- IV - ZAM Steel Mounting Series 57
- V - Solar Agriculture Mounting 59
- VI - Solar Waterproof Pergola Mounting 61
- VII - Oriental Waterproof Solar Gazebo 63

Carport Mounting 65

- I - Standard Carport Series 65
- II - Aluminum Waterproof Series 67
- III - ZAM Waterproof Series 69
- V - New Solar Waterproof Carport System 73

Others 75



ABOUT US

Xiamen Top Best Tech Co., Ltd belongs to Guanhuang Group, established in 2011. It is a company integrating the design, development, manufacturing, sales, and service of solar mounting systems with professionals engaged in solar energy mounting R&D production and sales with 1,600 m² in Fujian Xiamen. After years of development, it has become a manufacturer of solar mounting systems and solar power system integrators.

In 2019, a foreign trade team was established, and Our company mainly provides aluminum & steel solar mounting systems for power plants, and our products cover small rooftop power plants, medium commercial power plants, as well as large ground energy station fields and various types of solar system installation racks.

Top Best Solar has been one of the market leaders in solar mounting systems. After years of accumulation, the company has taken R&D and innovation as the driving force, continuously promoted product upgrades, and built a strong manufacturing capability and a complete industrial chain system; we have gathered extensive EPC, distributors, and developers' customer resources at home and abroad.

In China, our Guanhuang Group works closely with companies such as CHNT, SKYWORTH, Jinko, Risen, Midea, Hua Xia Bank, Haier, and LONGI; overseas, our Top Best Solar customers are all over the world, including Japan, Singapore, the Philippines, Indonesia, Malaysia, Africa, the Middle East, Europe, and South America.

The company currently has more than 500 employees. It fully implements ISO9001, ISO4001, ISO45001, and CE certificates and has a 28,000 Square meters manufacturing workshop and 2 of our factories. A group of strong teams focus on solar design and research and development.

TBS has focused on the solar mounting system manufacturing industry for more than 10 years. Top Best Solar is committed to serving customers all over the world, so that sunshine brings more green energy to everyone.



Headquarters



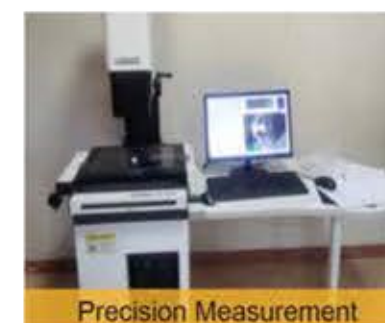
Southern Factory



Northern Factory



Laboratory Testing



Precision Measurement

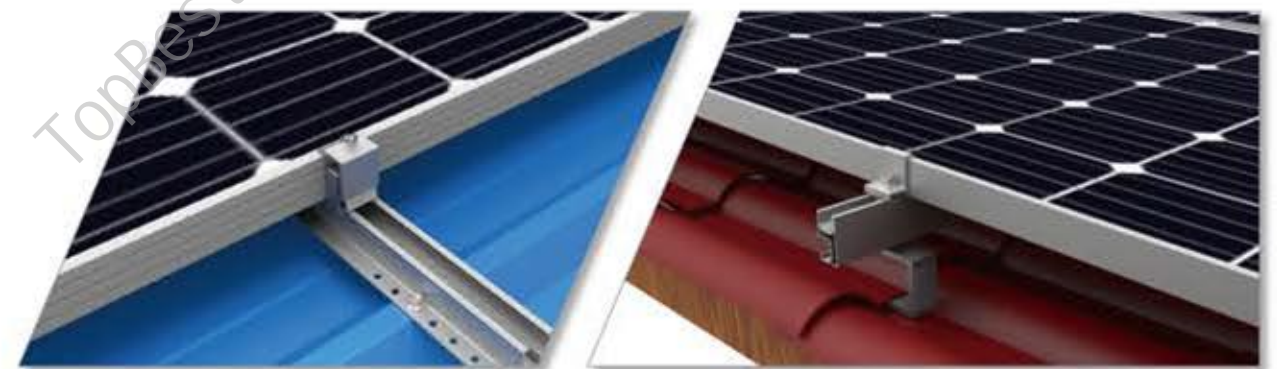


Export Loading



SOLAR ROOF MOUNTING

SOLAR ENERGY



Tile Roof Mounting I

- Stainless Steel Hook Series



Data Sheet

Installation site	Tile roof	Wind load	60 m/s
Material	SUS304,AL6063-T5/6005-T5	Snow load	3.6KN/M2
Tilt angle	0-60 degrees	Building height	Up to 20 m
Modules	Frame /Frameless solar module	Standard	AS/NZS1170&DIN1055
Panel array	Customized	Warranty	10 years
Component layout	Landscape,Portrait	Service life	25 years

Introduction

The so called "Double Adjustable" means the height of this solar hooks can adjusted with top or base slot.

It makes more flexible moving during mounts to the roofing whatever for curved or flat tiles.

The installation is for Bottom rail mounting – 180 degree horizontal .

The adjustable arm can fit for roman tile, clay tile or flat tiles Multi-functional solar roof hook mounts for Bottom rails can perfectly for Spanish tiles and flat tile roofing. Just by loose or tighten fitting easily.







Advantage

- Universal applied for both curved & flat tiles ;
- Double adjustable according to height of tile thickness;
- Easy operation and installation with pre-assembled packing ;
- Offer 10-Years Warranty for our Bottom mounted rails roofing hooks ;
- Quality Guarantee with Good quality 304 Steel and AL 6005 – T5 Aluminium .

Tile Hook Series



Components

- | | |
|--|---|
| <p>1</p>  <p>Rail
Model: 120040125
Material: AL6005-T5</p> | <p>2</p>  <p>No.15 Hook
Model: 100080090
Material: SUS304,STEEL</p> |
| <p>3</p>  <p>Mid Clamp
Model: 100100015
Material: AL6005-T5,SUS304</p> | <p>4</p>  <p>End Clamp
Model: 100110005
Material: AL6005-T5,SUS304</p> |
| <p>5</p>  <p>Connector
Model: 100020002
Material: AL6005-T5,SUS304</p> | <p>6</p>  <p>Bolt,Screw and Nut
Model: 100020003
Material: AL6005-T5,SUS304</p> |

Installation Steps



Tile Roof Mounting II

- Aluminum Hook Series



Data Sheet

Installation site	Tile roof	Wind load	60 m/s
Material	SUS304,AL6063-T5/6005-T5	Snow load	3.6KN/M2
Tilt angle	0-60 degrees	Building height	Up to 20 m
Modules	Frame /Frameless solar module	Standard	AS/NZS1170&DIN1055
Panel array	Customized	Warranty	10 years
Component layout	Landscape,Portrait	Service life	25 years

Introduction

The high-quality roof aluminum mounting is different from most stainless steel hooks on the market. Even with the thicker and wider shape design, the overall weight has a great advantage in stainless steel hooks, which can greatly reduce the pressure on the roof and make the roof installation safer. It makes the hook even if it is widened and thickened, but it is not bulky and very light.

The thickened aluminum structure brings high-strength stability and excellent corrosion resistance to the hook. The surface of the product is anodized, which is not easy to corrode and enhances its performance. The bottom is hollowed out, and the overall appearance is beautiful.

Aluminum hook is a popular product suitable for the current solar installation.

Advantage

- Beautiful appearance;
- Narrow base design;
- Aluminum material, light weight;
- Widened and thickened appearance design, strong stability;
- Deep corrugated design increases friction.

Tile Hook Series



Components

- | | |
|--|--|
| <p>1</p>  <p>Rail
Model: 1200040112
Material: AL6005-T5</p> | <p>2</p>  <p>No. 19 Hook
Model: 100020043
Material: AL6005-T5</p> |
| <p>3</p>  <p>Mid Clamp
Model: 100100015
Material: AL6005-T5,SUS304</p> | <p>4</p>  <p>End Clamp
Model: 100110005
Material: AL6005-T5,SUS304</p> |
| <p>5</p>  <p>Connector
Model: 100020002
Material: AL6005-T5,SUS304</p> | <p>6</p>  <p>Bolt, Screw and Nut
Model: 100020003
Material: AL6005-T5,SUS304</p> |

Installation Steps



Tile Roof Mounting III

- ZAM Steel Hook Series A



Data Sheet

Installation site	Tile roof	Wind load	60 m/s
Material	S350-ZM,SUS304,AL6005-T5	Snow load	3.6 KN / M2
Tilt angle	0-60 degrees	Building height	Up to 20 m
Modules	Frame /Frameless solar module	Standard	AS/NZS1170&DIN1055
Panel array	Customized	Warranty	10 years
Component layout	Landscape,Portrait	Service life	25 years

Introduction

The tile roof ZAM steel mounting adopts advanced modular design, and the components are fixed by guide rail beams and clamping blocks. The installation is convenient and quick, and the highly pre-assembled and customized solutions save a lot of installation time and money.

A professional manufacturer of glazed tile roof support systems, providing various support solutions for glazed tile roofs. The professional design allows the hook components to perfectly connect with the glass tiles.

Design schemes adapted to local conditions and excellent structural strength calculations save installation time and reduce installation costs. The patented accessory design brings you more fast installation.









Advantage

- The system is designed by skilled designers and can meet the export standards of various countries. The parts are made of high-quality ZAM and stainless steel with long service life. The main supporting parts are tested to ensure strength, stability and safety.
- There are only 4-5 parts in a system, and most of the accessories are pre-assembled, saving you time and money.
- Suitable for installing solar modules of any size on residential or commercial projects.


Tile Hook Series



Components

- | | |
|--|--|
| 1  <p>Steel Rail
Model: 100010201
Material: S350-ZM</p> | 2  <p>Steel Hook
Model: 100080115
Material: S350-ZM,SUS304</p> |
| 3  <p>Mid Clamp
Model: 100100017
Material: AL6005-T5,SUS304</p> | 4  <p>End Clamp
Model: 100110021
Material: AL6005-T5,SUS304</p> |
| 5  <p>Connector
Model: 100020002
Material: S350-ZM,SUS304</p> | 6  <p>Bolt Kits
Model: 100020003
Material: AL6005-T5,SUS304</p> |

Installation Steps

- 
- 
- 
- 
- 
- 
- 
- 

Tile Roof Mounting III

- ZAM Steel Hook Series B



Data Sheet

Installation site	Tile roof	Wind load	60 m/s
Material	S350-ZM,SUS304,AL6005-T5	Snow load	3.6 KN / M2
Tilt angle	0-60 degrees	Building height	Up to 20 m
Modules	Frame /Frameless solar module	Standard	AS/NZS1170&DIN1055
Panel array	Customized	Warranty	10 years
Component layout	Landscape,Portrait	Service life	25 years

Introduction

The tile roof ZAM steel mounting adopts advanced modular design, and the components are fixed by guide rail beams and clamping blocks. The installation is convenient and quick, and the highly pre-assembled and customized solutions save a lot of installation time and money.

A professional manufacturer of glazed tile roof support systems, providing various support solutions for glazed tile roofs. The professional design allows the hook components to perfectly connect with the glass tiles.

Design schemes adapted to local conditions and excellent structural strength calculations save installation time and reduce installation costs. The patented accessory design brings you more fast installation.



Advantage

- The system is designed by skilled designers and can meet the export standards of various countries. The parts are made of high-quality ZAM and stainless steel with long service life. The main supporting parts are tested to ensure strength, stability and safety.
- There are only 4-5 parts in a system, and most of the accessories are pre-assembled, saving you time and money.
- Suitable for installing solar modules of any size on residential or commercial projects.

Tile Hook Series



Components

- Steel Rail**
Material: S350-ZM
- Steel Hook**
Material: S350-ZM, SUS304
- Mid Clamp**
Material: AL6005-T5, SUS304
- End Clamp**
Material: AL6005-T5, SUS304
- Connector**
Material: S350-ZM, SUS304
- Bolt Kits**
Material: AL6005-T5, SUS304

Installation Steps



Metal Roof Mounting I

- Short Rail Series A



Data Sheet

Installation site	Metal roof	Wind Speed	60m/s
Material	SUS304,AL6005-T5 (Anodized)	Snow Load	3.6KN/M2
Tilt Angle	0-60°	Building height	Up to 20 m
Modules	Frame /Frameless solar module	Standard	AS/NZS1170 & DIN 1055
Array	Customized	Warranty	10years
Orientation	Landscape,Portrait	Service life	25 years

Introduction

The metal roof railless system is designed for trapezoidal metal. It can be fixed on the roof without additional guide rails directly, saving costs. It is easy to install and has a wide range of applications. It is suitable for large commercial and utility PV systems and is suitable for framed and frameless module installations, in portrait or landscape orientation.

Advantage

1. The system is designed by skilled engineers to meet international standards, the main support components make the stand stable and safe.

2. All components are pre-assembled, and the entire system has fewer parts, helping to save labor costs and time.

3. This system is suitable for almost solar panel residential and commercial projects, small rail length can be customized.

Components



Mini Rail

Material: AL6005-T5



Mid Clamp

Material: AL6005-T5
SUS304



End Clamp

Material: AL6005-T5
SUS304



Grounding Lugs

Material: AL6005-T5
SUS304



Grounding Washer

Material: AL6005-T5
SUS304



Self-Tapping Screw

Material: SUS304

Installation Steps

1



2



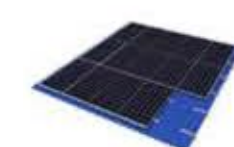
3



4



5



Mini Rail Type



Metal Roof Mounting I

- Short Rail Series B



Data Sheet

Installation site	Metal roof	Wind Speed	60m/s
Material	SUS304,AL6005-T5 (Anodized)	Snow Load	3.6KN/M2
Tilt Angle	0-60°	Building height	Up to 20 m
Modules	Frame /Frameless solar module	Standard	AS/NZS1170 & DIN 1055
Array	Customized	Warranty	10years
Orientation	Landscape,Portrait	Service life	25 years

Introduction

The metal roof railless system is designed for trapezoidal metal. It can be fixed on the roof without additional guide rails directly, saving costs. It is easy to install and has a wide range of applications. It is suitable for large commercial and utility PV systems and is suitable for framed and frameless module installations, in portrait or landscape orientation.

Advantage

1. The system is designed by skilled engineers to meet international standards, the main support components make the stand stable and safe.

2. All components are pre-assembled, and the entire system has fewer parts, helping to save labor costs and time.

3. This system is suitable for almost solar panel residential and commercial projects, small rail length can be customized.

Components



Mini Rail

Material: AL6005-T5



Mid Clamp

Material: AL6005-T5
SUS304



End Clamp

Material: AL6005-T5
SUS304



Grounding Lugs

Material: AL6005-T5
SUS304



Grounding Washer

Material: AL6005-T5
SUS304



Self-Tapping Screw

Material: SUS304

Installation Steps

1



2



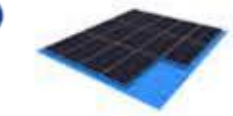
3



4



5

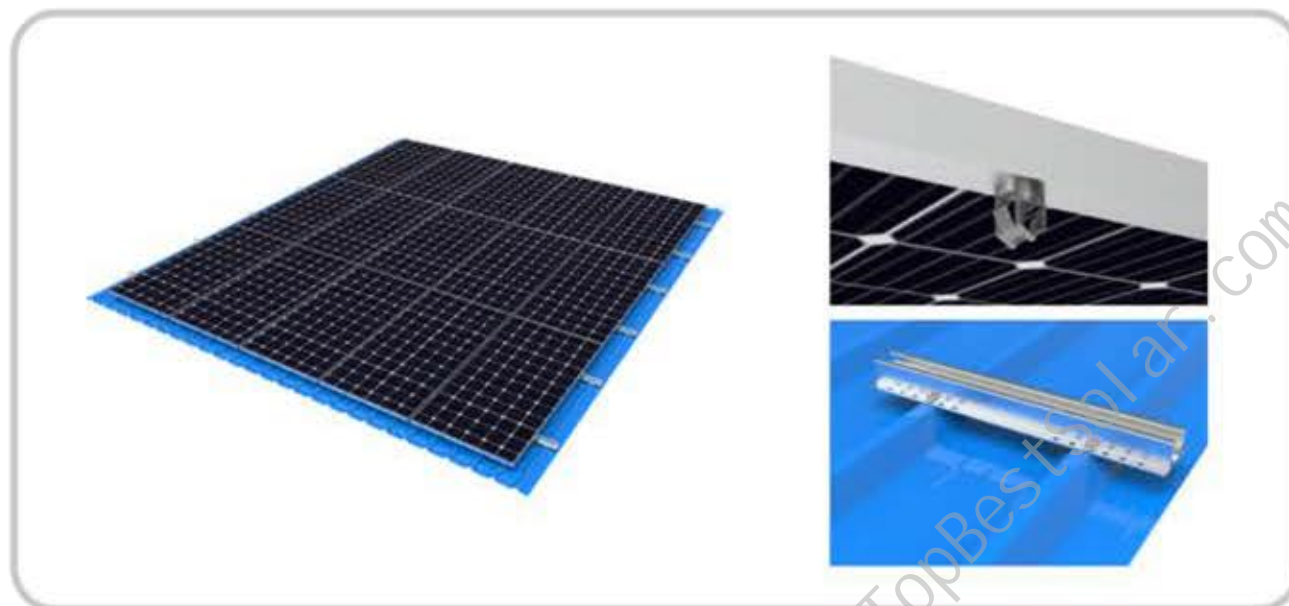


Mini Rail Type



Metal Roof Mounting I

- Short Rail Series C



Data Sheet

Installation site	Metal roof	Wind Speed	60m/s
Material	SUS304,AL6005-T5 (Anodized)	Snow Load	3.6KN/M2
Tilt Angle	0-60°	Building height	Up to 20 m
Modules	Frame /Frameless solar module	Standard	AS/NZS1170 & DIN 1055
Array	Customized	Warranty	10years
Orientation	Landscape,Portrait	Service life	25 years

Introduction

The metal roof railless system is designed for trapezoidal metal. It can be fixed on the roof without additional guide rails directly, saving costs. It is easy to install and has a wide range of applications. It is suitable for large commercial and utility PV systems and is suitable for framed and frameless module installations, in portrait or landscape orientation.

Advantage

1. The system is designed by skilled engineers to meet international standards, the main support components make the stand stable and safe.
2. All components are pre-assembled, and the entire system has fewer parts, helping to save labor costs and time.
3. This system is suitable for almost solar panel residential and commercial projects, small rail length can be customized.
4. This system is anti-theft and can be quickly installed.

Components



Installation Steps



Mini Rail Type



Metal Roof Mounting I

- Short Rail Series D



Data Sheet

Installation site	Metal roof	Wind Speed	60m/s
Material	S350-ZM,SUS304	Snow Load	3.6KN/M2
Tilt Angle	0-60°	Building height	Up to 20 m
Modules	Frame /Frameless solar module	Standard	AS/NZS1170 & DIN 1055
Array	Customized	Warranty	10years
Orientation	Landscape,Portrait	Service life	25 years

Introduction

The metal roof railless system is designed for trapezoidal metal. It can be fixed on the roof without additional guide rails directly, saving costs. It is easy to install and has a wide range of applications. It is suitable for large commercial and utility PV systems and is suitable for framed and frameless module installations, in portrait or landscape orientation.

Advantage

1. The system is designed by skilled engineers to meet international standards, the main support components make the stand stable and safe.
2. All components are pre-assembled, and the entire system has fewer parts, helping to save labor costs and time.
3. This system is suitable for almost solar panel residential and commercial projects, small rail length can be customized.

Components



Installation Steps



Mini Rail Type



Metal Roof Mounting II

- L Feet Series



Data Sheet

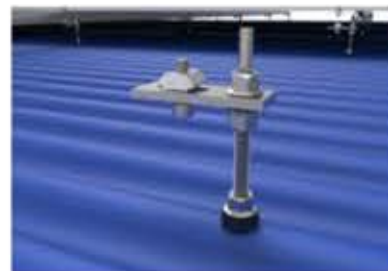
Installation site	Metal roof	Wind load	60 m/s
Material	AL6005-T5 (Anodized)	Snow load	3.6KN/M2
Tilt angle	0-60 degrees	Building height	Up to 20 m
Modules	Frame /Frameless solar module	Standard	AS/NZS1170&DIN1055
Panel array	Customized	Warranty	10 years
Orientation	Landscape,Portrait	Service life	25 years

Introduction

L feet are suitable for commercial, industrial and residential metal roofs. L feet are used with aluminum rails and fix photovoltaic modules through medium and side pressure on the rails. Can meet different installation requirements, multiple designs for different conditions and excellent structural strength calculation, suitable for framed and frameless solar panels, convenient installation method, simple structure, strong and durable.

Advantage

1. Suitable for different corrugated and trapezoidal metal roofs.
2. Save installation cost and time, easy installation and low cost.
3. It is the most widely used system for metal roofs on the market.
4. The layout can be adjusted according to the actual situation of the building.



Components



L Feet

Material: AL6005-T5



Rail

Material: AL6005-T5



Rail Connector

Material: AL6005-T5
SUS304



End Clamp

Material: AL6005-T5
SUS304



Mid Clamp

Material: AL6005-T5
SUS304



Grounding Washer

Material: SUS304



Grounding Lugs

Material: AL6005-T5
SUS304



Self-Tapping Screw

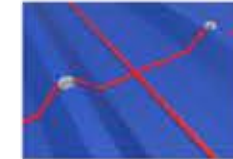
Material: SUS304

Installation Steps

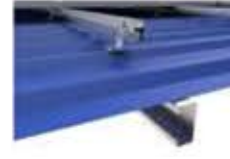
1



2



3



4



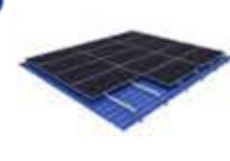
5



6



7



8



Application



Metal Roof Mounting III

- Corrugated Roof Clamp Series A



Data Sheet

Installation site	Metal roof	Wind load	60 m/s
Material	AL6005-T5 (Anodized)	Snow load	3.6KN/M2
Tilt angle	0-60 degrees	Building height	Up to 20 m
Modules	Frame /Frameless solar module	Standard	AS/NZS1170&DIN1055
Panel array	Customized	Warranty	10 years
Component layout	Landscape,Portrait	Service life	25 years

Introduction

Metal roof clamps are suitable for different tin roofs. Its professional design can realize the perfect connection between the clamps and the roof and meet the installation requirements of customers. Professional solutions and unique structural designs can save your installation time and cost. Suitable for framed or frameless solar modules and easy installation.



Advantage

1. Suitable for different corrugated metal roofs, professionally designed to achieve a perfect connection between the fixture and the roof.
2. Save installation cost and time, easy installation and low cost.
3. The self-developed fixture can match various standard solar modules, and the service life of the roof structure can reach 25 years.
4. Adjust the layout according to the actual situation, and the service life can reach 25 years.

Components



Clamps

Material: AL6005-T5



Rail

Material: AL6005-T5



Rail Connector

Material: AL6005-T5
SUS304



End Clamp

Material: AL6005-T5
SUS304



Mid Clamp

Material: AL6005-T5
SUS304



Grounding Washer

Material: SUS304



Grounding Lugs

Material: AL6005-T5
SUS304

Installation Steps

1



2



3



4



5



6



7



8

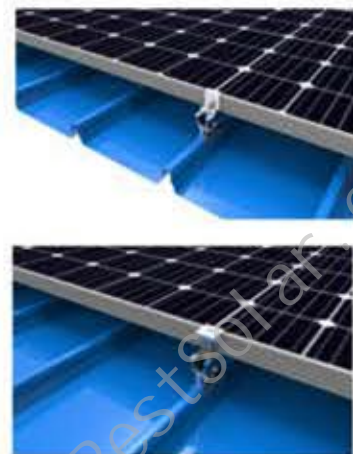


Optional Clamps



Metal Roof Mounting IV

- Corrugated Roof Clamp Series B



Data Sheet

Installation site	Metal roof	Wind load	60 m/s
Material	AL6005-T5 (Anodized)	Snow load	3.6KN/M2
Tilt angle	0-60 degrees	Building height	Up to 20 m
Modules	Frame /Frameless solar module	Standard	AS/NZS1170&DIN1055
Panel array	Customized	Warranty	10 years
Component layout	Landscape,Portrait	Service life	25 years

Introduction

Metal roof clamps are suitable for different tin roofs. Its professional design can realize the perfect connection between the clamps and the roof and meet the installation requirements of customers. Professional solutions and unique structural designs can save your installation time and cost. Suitable for framed or frameless solar modules and easy installation.



Advantage

1. Suitable for different corrugated metal roofs, professionally designed to achieve a perfect connection between the fixture and the roof.
2. Save installation cost and time, easy installation and low cost.
3. The self-developed fixture can match various standard solar modules, and the service life of the roof structure can reach 25 years.
4. Adjust the layout according to the actual situation, and the service life can reach 25 years.

Components



Clamps

Material: AL6005-T5



Mid Clamp

Material: AL6005-T5
SUS304



End Clamp

Material: AL6005-T5
SUS304



Grounding Washer

Material: SUS304



Grounding Lugs

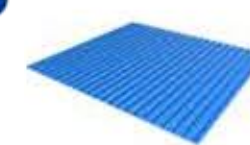
Material: AL6005-T5
SUS304

Installation Steps

1



2



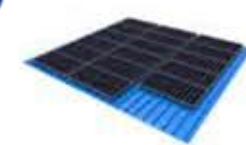
3



4



5



6



Optional Clamps



Metal Roof Mounting IV

- Trapezoidal Roof Clamp Series



Data Sheet

Installation site	Metal roof	Wind load	60 m/s
Material	SUS304,AL6005-T5 (Anodized)	Snow load	3.6KN/M2
Tilt angle	0-60 degrees	Building height	Up to 20 m
Modules	Frame /Frameless solar module	Standard	AS/NZS1170&DIN1055
Panel array	Customized	Warranty	10 years
Component layout	Landscape,Portrait	Service life	25 years

Introduction

The trapezoidal roof clamp is suitable for the trapezoidal roof of large-area factory buildings or warehouses, which can realize the perfect connection between the clamp and the roof and meet the installation requirements of customers. Professional solutions and unique structural designs can save your installation time and cost. Suitable for framed or frameless solar modules, can bring you a good installation experience.

Advantage

1. Suitable for almost all trapezoidal metal roofs.
2. Save installation cost and time, easy to install.
3. Adjustable universal trapezoidal clamp.
4. The layout can be adjusted according to the actual situation of the building.



Components



Trapezoidal Clamps

Material: AL6005-T5



Rail

Material: AL6005-T5



Rail Connector

Material: AL6005-T5
SUS304



End Clamp

Material: AL6005-T5
SUS304



Mid Clamp

Material: AL6005-T5
SUS304



Grounding Washer

Material: SUS304

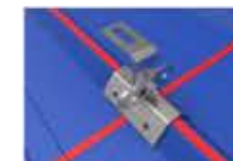


Grounding Lugs

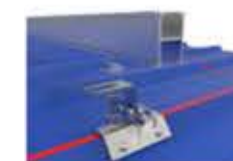
Material: AL6005-T5
SUS304

Installation Steps

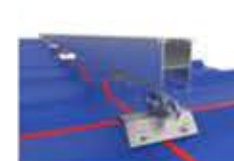
1



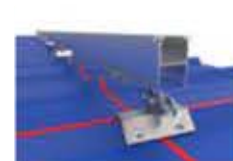
2



3



4



5



6



7



8



Others



Metal Roof Mounting V

- Adjustable Leg Series



Data Sheet

Installation site	Metal roof / Flat roof	Wind load	60 m/s
Material	SUS304,AL6063-T5/6005-T5	Snow load	3.6 KN / M2
Tilt angle	0-60 degrees	Building height	Up to 20 m
Modules	Frame /Frameless solar module	Standard	AS/NZS1170&DIN1055
Panel array	Customized	Warranty	10 years
Component layout	Landscape,Portrait	Service life	25 years

Introduction

It is suitable for commercial, industrial and residential metal and mixed soil flat roofs, its professional design can realize the perfect connection of clamps and roofs to meet customers' installation requirements. The adjustable tilt system is 10-15 degrees, 15-30 degrees, 30-60 degrees. It can meet different installation requirements, carry out multiple designs and excellent structural strength calculations for different conditions, and is suitable for framed and frameless solar panels. It is easy to install, simple in structure, and durable.



Advantage

1. Suitable for almost all metal roofs/flat roofs.
2. Save installation cost and time, easy to install.
3. Angle, height adjustable for practical installation.
4. The layout can be adjusted according to the actual situation of the building..

Components



Adjustable Rear Legs

Material: AL6005-T5
SUS304



Rail

Material: AL6005-T5



Rail Connector

Material: AL6005-T5



End Clamp

Material: AL6005-T5,
SUS304



Mid clamp

Material: AL6005-T5
SUS304



Grounding Washer

Material: SUS304



Grounding Lugs

Material: AL6005-T5
SUS304



Adjustable Front Legs

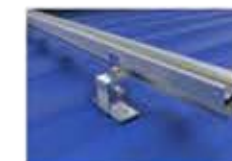
Material: AL6005-T5

Installation Steps

1



2



3



4



5



6

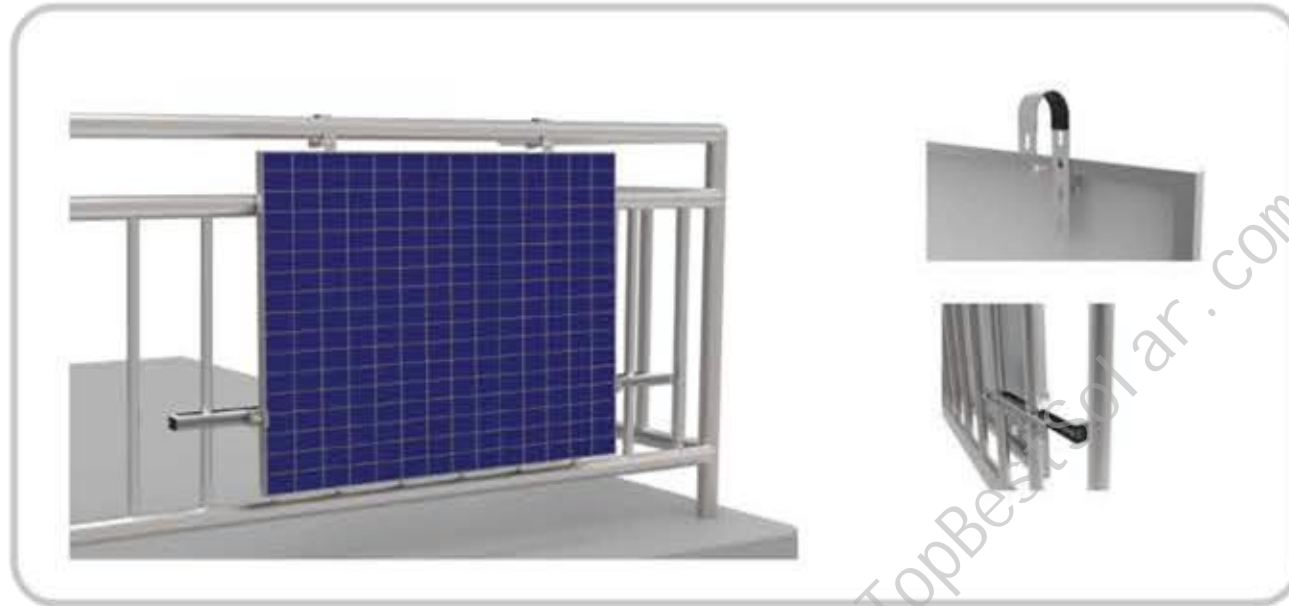


Application



Balcony Mounting System

- Aluminum Balcony Mounting



Data Sheet

Installation site	Balcony	Wind load	40 m/s
Material	SUS304,AL6063-T5/6005-T5	Snow load	3.6 KN / M2
Tilt angle	0-60 degrees	Building height	Up to 20 m
Modules	Frame solar module	Standard	AS/NZS1170&DIN1055
Panel array	Customized	Warranty	10 years
Component layout	Landscape,Portrait	Service life	25 years

Introduction

Aluminum balcony mounting is suitable for balcony railings and is specially designed to match various balcony railings. Highly pre-assembled to reduce installation time. Suitable for framed and frameless solar panels, easy to install, simple in structure, sturdy and durable.

Installation and removal are very simple and quick; the installation can be completed by 1-2 people. The system is bolted and fixed, so there is no need for welding or drilling during installation.

Advantage

1. Suitable for most types of balcony railings.
2. Small variety of accessories, easy installation.
3. Lower electricity costs.
4. Support customized.

Components



Hook

Material: AL6005-T5
EPDM



Rail

Material: AL6005-T5
EPDM



Aluminum Plate

Material: AL6005-T5
EPDM



End Clamp

Material: AL6005-T5
SUS304



Bolt 1

Material: SUS304



Bolt 2

Material: SUS304

Installation Steps

1



2



3



4



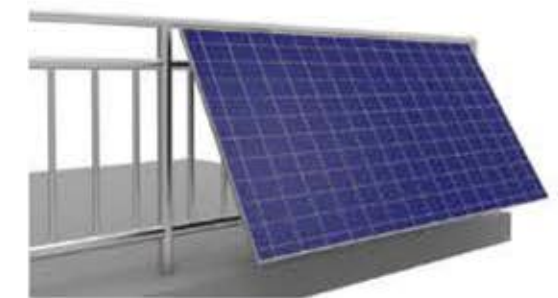
5



6



Balcony Type



Balcony Mounting System

- Adjustable Balcony Mounting



Data Sheet

Installation site	Balcony	Wind load	40 m/s
Material	Al6005-T5	Snow load	3.6 KN / M2
Tilt angle	0-45 degrees	Building height	Up to 20 m
Modules	Frame solar module	Standard	AS/NZS1170&DIN1055
Panel array	Customized	Warranty	10 years
Component layout	Landscape	Service life	25 years

Introduction

Adjustable balcony mounting is made for the balcony. High-quality material corrosion resistance, and beautiful appearance. Pre-assembled, saving a lot of assembly time and labor costs. The fold design is convenient to transportation and installation.

This product of the solar panel balcony mount manufacturer can adjust the angle according to different situations. And this triangle structure produced by the solar panel balcony mount support has wide applicability. As long as it is equipped with railings, it can be met. When installing, only hang the hook on the balcony railing. The installation method is simple and easy.

Advantage

1. Wide applicability;
2. Nice appearance;
3. Pre-assembled design;
4. Angle and height can be adjusted;
5. Simple to install and needn't drill holes;
6. High-quality material, lightweight, and corrosion resistance.

Components



Hook1
Material: SUS304



Hook2
Material: SUS304



Angle Bar 1
Material: AL6005-T5



Angle Bar 2
Material: AL6005-T5



U Rail
Material: AL6005-T5



Bolt
Material: SUS304

Installation Steps

1



2



3



4



5



Balcony Type



Flat Roof Mounting I

- Adjustable Ballast Series



Data Sheet

Installation site	Flat Roof	Wind load	60 m/s
Material	SUS304,AL6005-T5 (Anodized)	Snow load	3.6 KN / M2
Tilt angle	0-60 degrees	Building height	Up to 20 m
Modules	Frame /Frameless solar module	Standard	AS/NZS1170&DIN1055
Panel array	Customized	Warranty	10 years
Component layout	Landscape,Portrait	Service life	25 years

Introduction

Adjustable ballast systems can be angled towards the sun, so they take full advantage of UV rays from the sun and the light is not reflected off the panel.










This system is easy to be installed, good stability. It is widely used in concrete foundation or metal sheet rooftop solar projects. The simple yet robust rack structure enables it to take full advantage of the existing roof, and the adjustable Angle greatly increases the power generation.

Advantage

1. Safety and good stability Ensure strength, stability and safety.
2. Easy to install All components are pre-installed, helping to save labor costs and time.
3. Adjustable Angle The Angle can be adjusted to greatly increase the power generation.



Components

	Adjustable Bracket Material: AL6005-T5 SUS304		Rail Material: AL6005-T5		Rail Connector Material: AL6005-T5 SUS304
	End Clamp Material: AL6005-T5 SUS304		Mid clamp Material: AL6005-T5 SUS304		Grounding Washer Material: SUS304
	Grounding Lugs Material: AL6005-T5 SUS304		Wind Shield Material: AL6005-T5		Ballasted Plate Material: AL6005-T5

Installation Steps



Application



Flat Roof Mounting II

- Railless Ballast Series



Data Sheet

Installation site	Flat Roof	Wind load	60 m/s
Material	S350-ZM, SUS304, AL6005-T5	Snow load	3.6 KN / M2
Tilt angle	0-60 degrees	Building height	Up to 20 m
Modules	Frame solar module	Standard	AS/NZS1170&DIN1055
Panel array	Customized	Warranty	10 years
Component layout	Landscape, Portrait	Service life	25 years

Introduction

The flat roof mounting-railless ballast is suitable for wide horizontal orientation. The support system is made of Zam Zinc-Aluminum-Magnesium steel 275, so the overall stability of the support is strong and the ability to resist wind and snow is strong. For different foundation solutions, the support system can be fixed on the cement foundation with ballast tray, or directly fixed on the cement foundation by bolt. The system has flexible design, diversified structure and wide application range.

Advantage

1. Easy installation: Only three components parts for the system, easy to installation.
2. Safety and dependability: Made of high-quality ZAM steel, it prevents corrosion and oxidation; it is recycled and environmentally friendly. The overall structure fully considers factors such as load-bearing, wind resistance, snow resistance and earthquake resistance to ensure safety and reliability.
3. Flexibility: Smart design reduces the complexity of installation in the majority of situations through flexibility and adjustability.

Components



Front Leg

Material: S350-ZM



Middle Leg

Material: S350-ZM



Rear Leg

Material: S350-ZM



End Clamp

Material: AL6005-T5
SUS304



Grounding Washer

Material: SUS304

Installation Steps

1



2



3



4



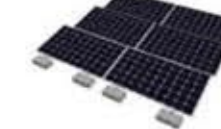
5



6



7

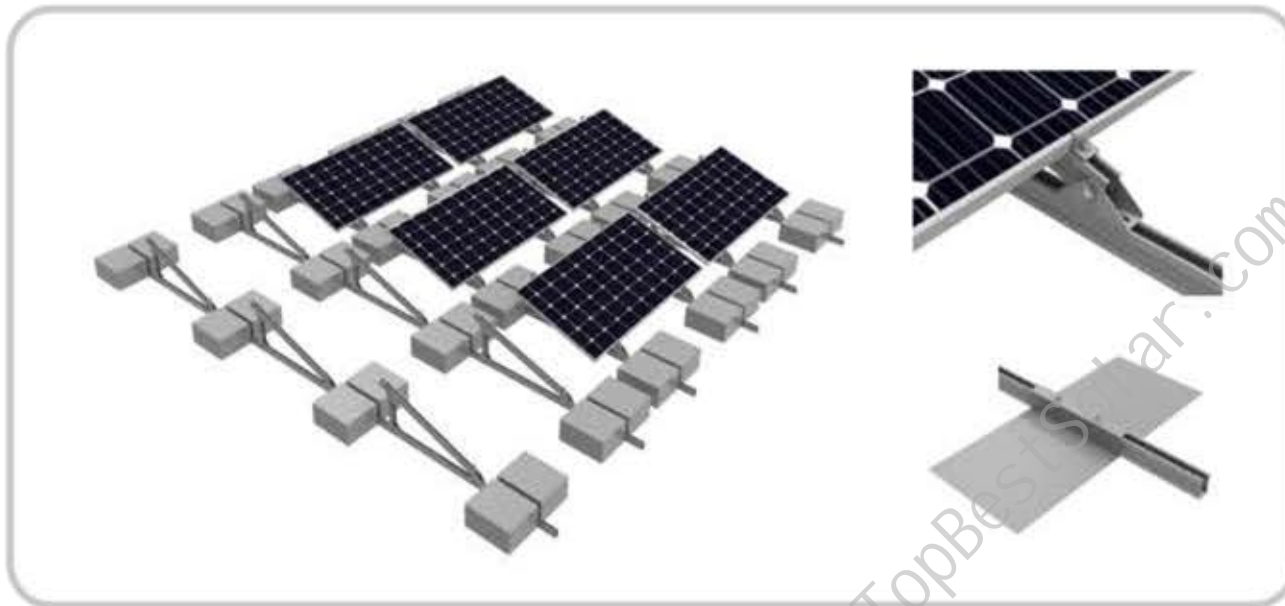


Application



Flat Roof Mounting III

- ZAM Steel Mounting Series



Data Sheet

Installation site	Flat Roof	Wind load	60 m/s
Material	S350-ZM, SUS304, AL6005-T5	Snow load	3.6 KN / M2
Tilt angle	0-60 degrees	Building height	Up to 20 m
Modules	Frame /Frameless solar module	Standard	AS/NZS1170&DIN1055
Panel array	Customized	Warranty	10 years
Component layout	Landscape, Portrait	Service life	25 years

Introduction

The U-steel ballast system is a solution developed for non-penetrating flat roofs. This system is a rooftop photovoltaic mounting product that can be used at a variety of installation angles and is suitable for installation in high wind load areas. The professional structural design makes the system more stable, stronger, and simpler to install.

Advantage

- 1. Durable and ensures system strength**
The professional structural design uses high-strength U-steel material to ensure the overall stability and strength of the system while saving transportation and packaging space and improving installation efficiency.
- 2. Unique matrix design**
The matrix design makes the entire system more stable, greatly reducing the configuration ballast weight requirements, and can be flexibly and effectively installed with the cement foundation, with a rational design for packaging and installation.
- 3. Easy to installation.**
Easy to disassemble, the high-density structural design ensures the least cabinet space.

Components



End Clamp

Material: AL6005-T5
SUS304



Triangle Kits

Material: S350-ZM
SUS304



Rail

Material: S350-ZM



Rail Connector

Material: S350-ZM
SUS304



Ballast Tray

Material: S350-ZM
SUS304

Installation Steps

1



2



3



4



5



6



7



Application



Flat Roof Mounting IV

- Triangle Mounting Series A



Data Sheet

Installation site	Flat Roof	Wind load	60 m/s
Material	SUS304,AL6063-T5/6005-T5	Snow load	3.6 KN / M2
Tilt angle	0-60 degrees	Building height	Up to 20 m
Modules	Frame /Frameless solar module	Standard	AS/NZS1170&DIN1055
Panel array	Customized	Warranty	10 years
Component layout	Landscape,Portrait	Service life	25 years

Introduction

Triangle mounting systems are suitable for all types of flat concrete roofs, designed for flat roofs with non-permeable solutions. Highly pre-assembled, reducing installation time. Suitable for frame and frameless solar panels, easy installation, simple structure, strong and durable. Highly pre-assembled, reducing installation time. Suitable for frame and frameless solar panels, easy installation, simple structure, strong and durable.



Advantage

1. Suitable for most types of concrete roofs;
2. High strength aluminum alloy material to ensure. The overall stability and strength of the system.
3. It can be customized according to the actual situation of the building.



Components



Triangle

Material: AL6005-T5
SUS304



Rail

Material: AL6005-T5



Rail Connector

Material: AL6005-T5
SUS304



End Clamp

Material: AL6005-T5
SUS304



Mid Clamp

Material: AL6005-T5
SUS304



Grounding Washer

Material: SUS304



Grounding Lugs

Material: AL6005-T5
SUS304



L Connector

Material: AL6005-T5
SUS304



Ballasted Plate

Material: AL6005-T5

Installation Steps

1



2



3



4



5



6



Application



Flat Roof Mounting IV - Triangle Mounting Series B



Data Sheet

Installation site	Flat Roof	Wind load	60 m/s
Material	S350-ZM,SUS304	Snow load	3.6 KN / M2
Tilt angle	0-60 degrees	Building height	Up to 20 m
Modules	Frame /Frameless solar module	Standard	AS/NZS1170&DIN1055
Panel array	Customized	Warranty	10 years
Component layout	Landscape,Portrait	Service life	25 years

Introduction

Triangle mounting systems are suitable for all types of flat concrete roofs, designed for flat roofs with non-permeable solutions. Highly pre-assembled, reducing installation time. Suitable for frame and frameless solar panels, easy installation, simple structure, strong and durable. Highly pre-assembled, reducing installation time. Suitable for frame and frameless solar panels, easy installation, simple structure, strong and durable.



Advantage

1. Suitable for most types of concrete roofs;
2. High strength ZAM steel material to ensure. The overall stability and strength of the system.
3. It can be customized according to the actual situation of the building.



Components



Installation Steps

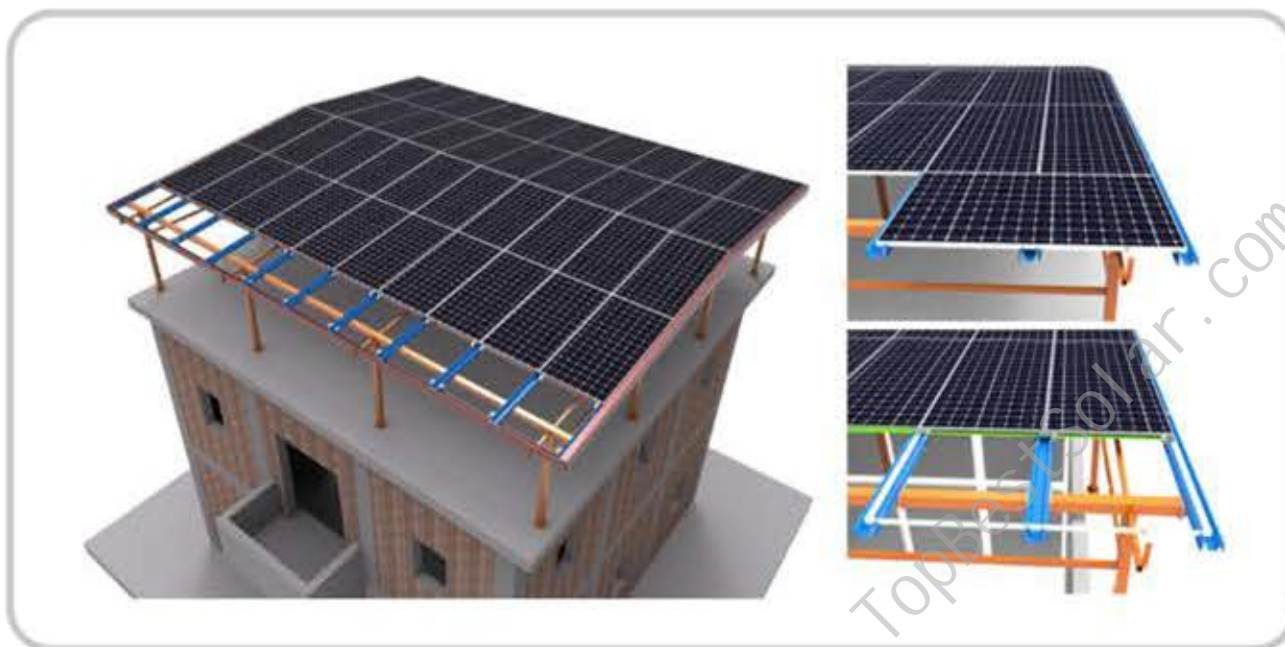


Application



Flat Roof Mounting V

- Waterproof Series



Data Sheet

Installation site	Residential/Commercial flat roofing	Wind speed	60m/s
Material	ZAM, AL6005-T5 (Anodized)	Snow load	3.6KN/M2
Tilt angle	0-30°	Building height	Up to 20 m
Modules	Frame /Frameless solar module	Standard	AS/NZS1170&DIN1055
Array	Customized	Warranty	10years
Orientation	Landscape,Portrait	Service life	25 years

Introduction

Building a solar conservatory on the roof that can generate electricity can not only make full use of the roof space to generate electricity, but also effectively protect the floor from cracking and leaking due to wind and sun.

The Flat Roof Waterproof Mounting does not need to destroy the old roof, but builds a brand new roof on the entire floor, which is beautiful and generous.

The Flat Roof Waterproof Mounting provided by our company is made of high-quality zinc-aluminum-magnesium and aluminum alloy, which is anti-corrosion and anti-rust, and has a service life of more than 25 years.

Advantage

1. Like a "green greenhouse" on the roof to make full use of the roof space;
2. Stable structure; strong corrosion resistance
3. Easy installation; short construction period
4. Cost-effective, 10-year warranty;
5. Highly waterproof.



Components



M Channel
Material: S350-ZM



U Channel
Material: S350-ZM



Side Channel
Material: S350-ZM



Block Kits
Material: S350-ZM
AL6005-T5



Square Tube
Material: S350-ZM



Channel Connector
Material: S350-ZM



Channel Clamp
Material: AL6005-T5
SUS304



Brage Kits
Material: AL6005-T5
SUS304



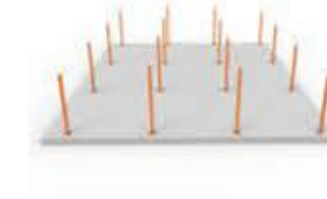
Front Channel
Material: S350-ZM

Installation Steps

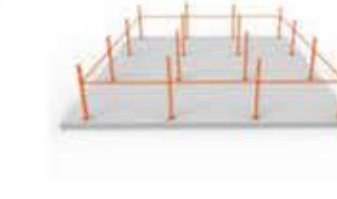
1



2



3



4



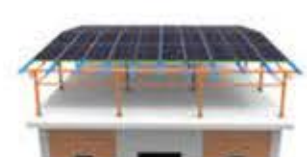
5



6



7



8

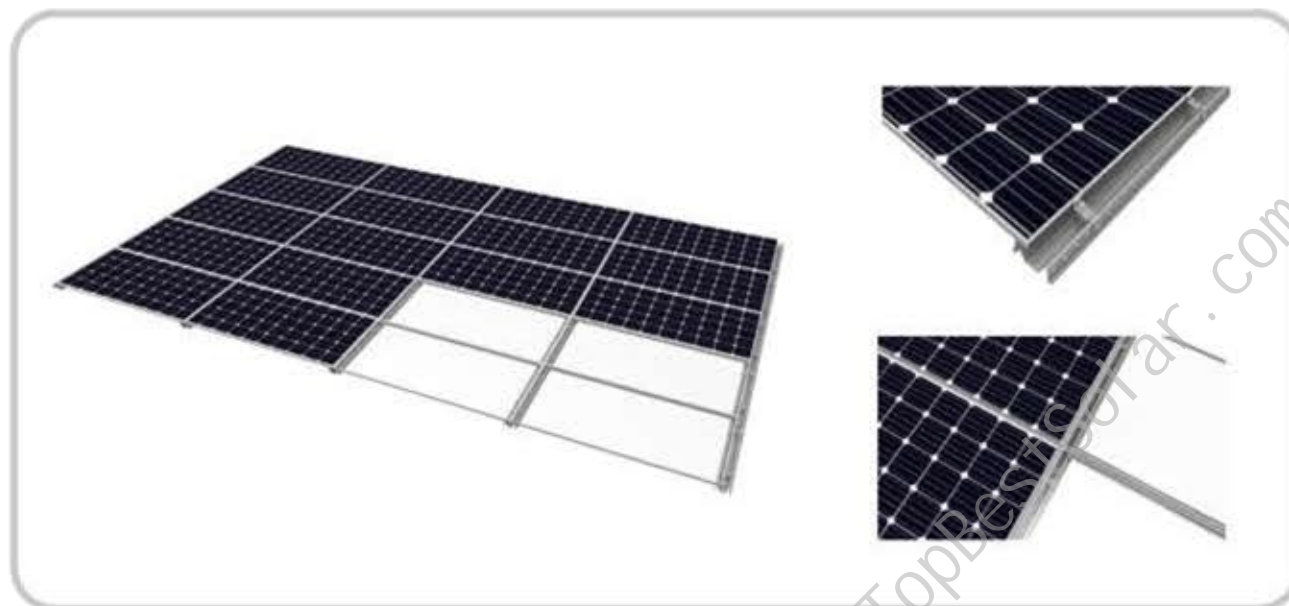


9



Solar Waterproof Mounting I

- ZAM Steel Waterproof Mounting



Data Sheet

Installation site	Roof/Carport/Solar Pergola	Wind load	60 m/s
Material	S350-ZM,SUS304,AL6005-T5	Snow load	3.6 KN / M2
Tilt angle	0-60 degrees	Building height	Up to 20 m
Modules	Frame /Frameless solar Module	Standard	AS/NZS1170&DIN1055
Panel array	Customized	Warranty	10 years
Component layout	Landscape,Portrait	Service life	25 years

Introduction

Our solar Waterproof Mounting for solar panel provides the perfect solution for building with PV generation, adopting innovative product design to ensure the whole structure 100% waterproof and easy to maintain.

The Solar waterproof structure for solar panel solution enables the solar power generation system to better fit the roof surface. Compared with ordinary standing seam roof solar mount, it has full waterproof performance and greatly improved the service life. The configuration of the lateral board for overhaul facilitates system maintenance. At the same time, the laying of the light transmissive double-sided solar panel effectively improves the roof light transmittance.

The Solar waterproof structure is a waterproof bracket with frame photovoltaic panels, which can be used for the waterproof of roof, car shed, sunshine shed and other supports. With excellent waterproofing property, Solar waterproof structure is popular with customers.

Advantage

1. Big drainage structures and high strength channel, fast drainage and good waterproof.
2. Widen the gutter to include the panel border.
3. Excellent Adaptability and it can be directly install on purlins or metal sheet.
4. Savings on traditional roofing costs for new construction or renovation.

Components



M channel

Material: S350-ZM



U Water Channel

Material: S350-ZM



Mid Clamp

Material: S350-ZM
AL6005-T5
SUS304



End Clamp

Material: S350-ZM
AL6005-T5
SUS304



Cover

Material: AL6005-T5

Installation Steps

1



2



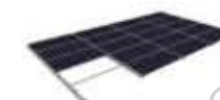
3



4



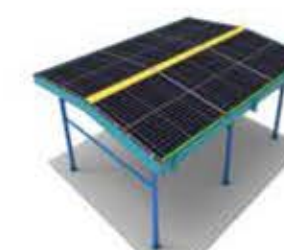
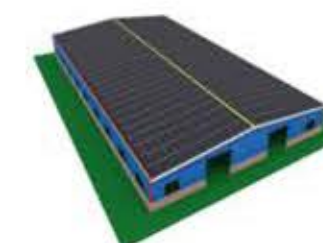
5



6



Application Type



Solar Waterproof Mounting II

- Aluminum Waterproof Mounting



Data Sheet

Installation site	Roof/Carport/Solar Pergola	Wind load	60 m/s
Material	SUS304,AL6063-T5/6005-T5	Snow load	3.6KN/M2
Tilt angle	0-30°	Building height	Up to 20 m
Modules	Frame/ Frameless solar module	Standard	AS/NZS1170&DIN1055
Panel array	Customized	Warranty	10 years
Component layout	Landscape,Portrait	Service life	25 years

Introduction

Aluminum waterproof solar mounting is the latest products comply with the demand of the market. The waterproof stent is mainly applied to Residential industry and commercial metal roof etc..

Typical Applications:

Waterproof Area on House, Villa Waterproof Area on Rooftop ,

Waterproof Area on Metal Roof , Carport.

Advantage

1. There is a perfectly designed rail groove, which can effectively keep out water. It has strong resistance to rain and water coming from the front.
2. Inclined plane design, rain water flowing down. This design is high inside and low outside, the bottom of the guide groove is opened with a drain, rainwater flows down through the drain under the action of gravity.
3. Equal height rail, beautiful shape. By adding and subtracting the height of the guide groove and the inclined plane of the lower rail, the guide rail is kept equal to the ground height, and the height of the inner and outer trapezoid is the same, so as to maintain the beauty.
4. Wear resistance and corrosion resistance of the rail. This rail has high strength, wear resistance, not easy deformation and corrosion resistance.

Components



W Rail

Material: AL6005-T5



U Channel

Material: AL6005-T5



Rail Connector

Material: AL6005-T5



Connector Nut

Material: AL6005-T5
SUS304



End Clamp

Material: AL6005-T5
SUS304



Mid Clamp

Material: AL6005-T5
SUS304



Top Cover

Material: AL6005-T5



L Connector

Material: AL6005-T5
SUS304

Installation Steps

1



2



3



4



5



6

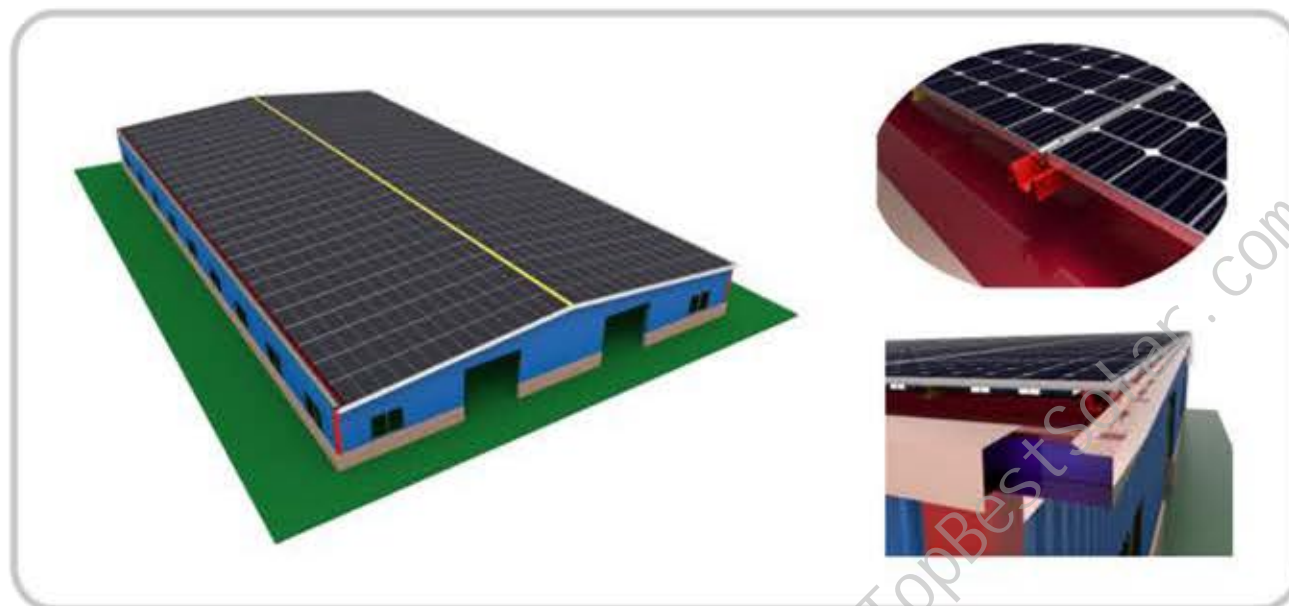


7



Solar Waterproof Mounting III

- Waterproof Commercial Plant

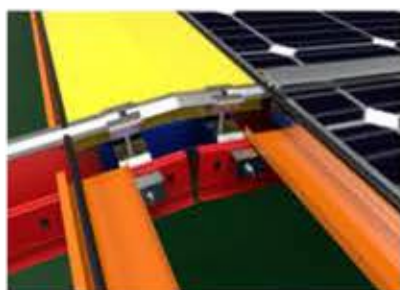


Data Sheet

Installation site	Waterproof solar factory	Wind speed	60m/s
Material	S350-ZM,SUS304,AL6005-T5	Snow load	3.6KN/M2
Tilt angle	0-30°	Building height	Up to 20 m
Modules	Frame solar module	Standard	AS/NZS1170&DIN1055
Array	Customized	Warranty	10 years
Orientation	Landscape,Portrait	Service life	25 years

Introduction

BIPV solar system is an application that integrates solar power generation into buildings, realizing the perfect combination of photo voltaic power generation and buildings. Photovoltaic materials are used to replace traditional building materials and are installed on the side of walls and roofs to make the building itself a power source. It can not only meet various design requirements such as water leakage and shrinkage of conventional defensive buildings, but also has wind speed and snow resistance. It has the advantages of strong load capacity, good ventilation, good lighting, heat insulation, fire prevention, waterproof, convenient operation and maintenance.



Advantage

1. Excellent ventilation and heat dissipation performance, large output power.
2. Easy to install and strengthen the overall structure.
3. Save the cost of roof laying and renovation, and greatly reduce the construction cost.
4. djustable high inclination angle to maximize light absorption and drainage performance.

Components



M Channel

Material: S350-ZM

Cover

Material: AL6005-T5



U Channel

Material: S350-ZM



Channel Clamp

Material: AL6005-T5
SUS304



Front Channel

Material: S350-ZM



Side Cover

Material: S350-ZM



M Channel Connector

Material: S350-ZM



Mid Clamp Kits

Material: S350-ZM
AL6005-T5
SUS304



End Clamp Kits

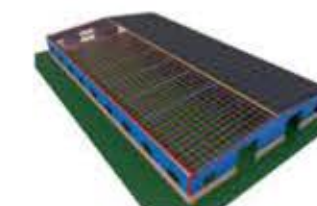
Material: S350-ZM
AL6005-T5
SUS304

Installation Steps

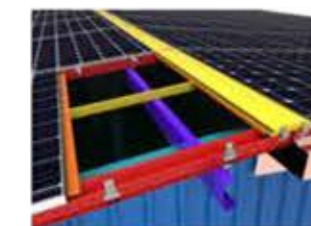
1



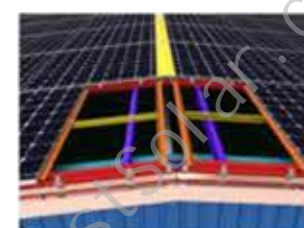
2



3



4



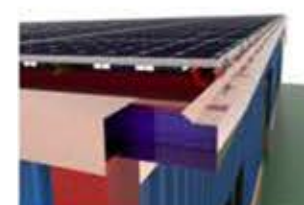
5



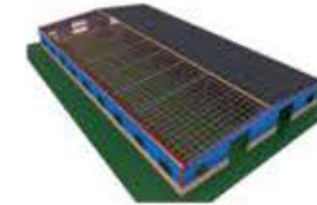
6



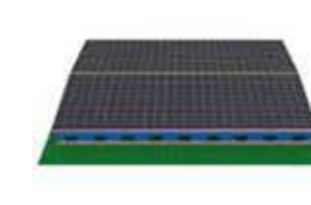
7



8



9





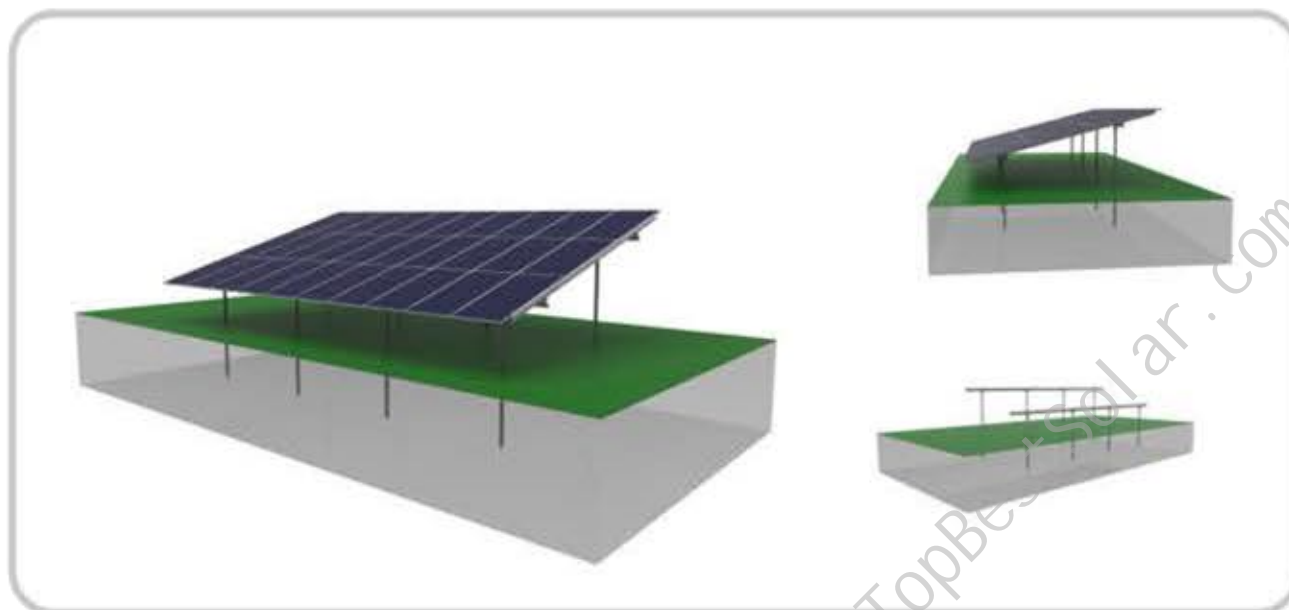
SOLAR GROUND MOUNTING

SOLAR ENERGY



Ground Mounting System I

- Pile Mounting Series



Data Sheet

Installation site	Open area	Wind load	60 m/s
Material	S350-ZM,SUS304,AL6005-T5	Snow load	3.6 KN / M2
Tilt angle	0-60 degrees	Building height	Up to 20 m
Modules	Frame solar Module	Standard	AS/NZS1170&DIN1055
panel array	Customized	Warranty	10 years
component layout	Landscape,Portrait	Service life	25 years

Introduction

The Solar pile ground mounting is one of the most economical solutions for photovoltaic ground installation. It uses carbon steel to directly drive piles into the ground. The simple structural design greatly improves the installation efficiency and reduces the installation cost. At the same time, its hot-dip galvanized surface treatment ensures that the system has a long service life even when installed in harsh environments.

The Solar pile ground mounting is suitable for installation in large-scale commercial and public utility power plants. It is especially suitable for situations with uneven terrain. The support structure is firm and stable. It is mainly made of carbon steel and has the advantages of high wind speed and heavy snow load. It is unique. The structural design ensures strength and can effectively reduce installation time and labor costs, bringing customers a richer return on investment. Solar pile ground mounting is widely used in various types of terrain, especially large solar power stations, solar farms, etc.

Advantage

1. Easy and quick installation.
2. Highly pre-assembled, easy to install and low labor cost.
3. The angle can be adjusted within a certain range.
4. The system layout can be adjusted according to the actual site conditions and north-south to maximize photovoltaic power generation and have good component compatibility.
5. Support customization design.

Components



Rail
Material: AL6005-T5



Beam
Material: S350-ZM



Rail clamp
Material: AL6005-T5
SUS304



Beam Connector
Material: S350-ZM
SUS304



Column Connector
Material: S350-ZM
SUS304



Front Pillar
Material: S350-ZM



Back Pillar
Material: S350-ZM



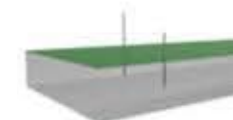
Seal Rubber
Material: EPDM



Panel Clamp
Material: AL6005-T5
SUS304

Installation Steps

1



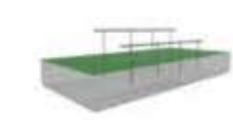
2



3



4



5



6



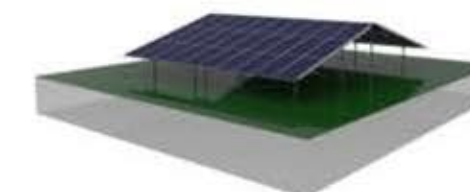
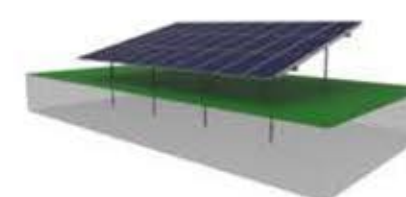
7



8

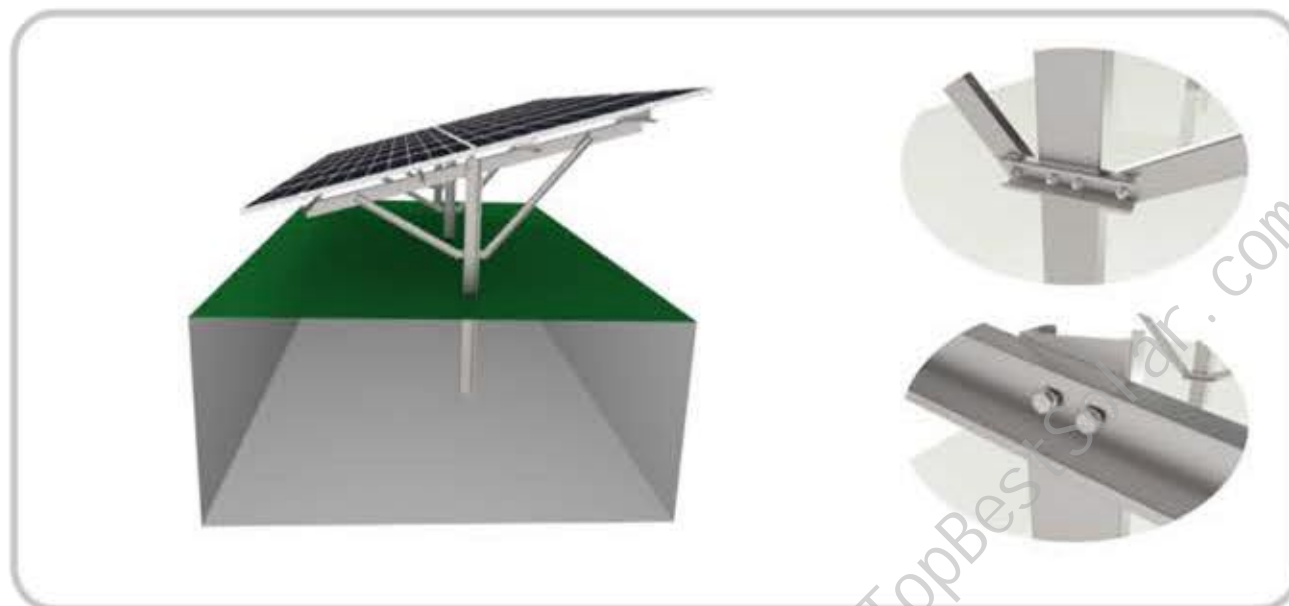


Solar Mounting Type



Ground Mounting System II

- Single Post Series



Data Sheet

Installation site	Open Area	Wind load	60 m/s
Material	S350-ZM,SUS304,AL6005-T5	Snow load	3.6 KN / M2
Tilt angle	0-60 degrees	Building height	Up to 20 m
Modules	Frame /Frameless solar module	Standard	AS/NZS1170&DIN1055
Panel array	Customized	Warranty	10 years
Component layout	Landscape,Portrait	Service life	25 years

Introduction

Single column system is one of the most economical solutions for solar ground mounting. HDG steel is used to drive directly into the ground. The simple structure design greatly improves the installation efficiency and reduces the installation cost, while its hot galvanized surface treatment ensures that the system has a long service life even when installed in harsh environments.

This system is suitable for the installation of large commercial and public utility power plants, especially for the occasion of uneven terrain. The support structure is firm and stable, mainly made of carbon steel material, and has the advantages of high wind speed and large snow load. The unique structure design ensures the strength and can effectively reduce the installation time and labor cost. To bring customers more lucrative investment returns.

Single column solar support installation is widely used in various types of terrain, especially in large solar power stations, solar farms, etc.

Advantage

1. Fast and easy to install.
2. Highly preinstalled, easy installation, low labor cost.
3. The Angle can be adjusted within a certain range.
4. The system layout can be adjusted according to the actual situation on site, and can be adjusted in vertical, east-west, southwest and north-south directions to maximize the realization of photovoltaic power generation with good component compatibility.
5. One-arm and two-arm designs.

Components



I Beam

Material: S350-ZM



C Rail

Material: S350-ZM



Bracing

Material: S350-ZM



Rail Splice

Material: S350-ZM
SUS304



Connector 1

Material: S350-ZM
SUS304



Connector 2

Material: S350-ZM
SUS304



Beam

Material: S350-ZM



End Clamp

Material: AL6005-T5
SUS304



Mid Clamp

Material: AL6005-T5
SUS304

Installation Steps

1



2



3



4



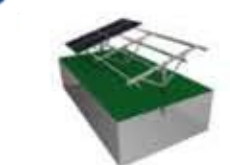
5



6



7



8

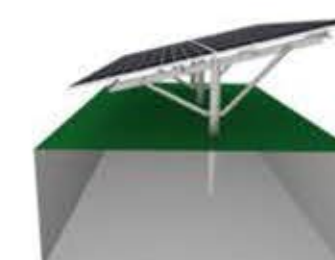


Rack Type

Single Support



Double Support



Ground Mounting System III

- Aluminum Mounting Series



Data Sheet

Installation site	Open area	Wind load	60 m/s
Material	SUS304,6005-T5	Snow load	3.6 KN / M2
Tilt angle	0-60 degrees	Building height	Up to 20 m
Modules	Frame /Frameless solar module	Standard	AS/NZS1170&DIN1055
Panel array	Customized	Warranty	10 years
Component layout	Landscape,Portrait	Service life	25 years

Introduction

Depending on the situation, there are several solution options and the system proceeds according to structural mechanics.













Calculation and strict testing, the material is made of zinc, aluminum, magnesium and aluminum alloy, both of which have strong anti-corrosion performance and can be used outdoors for at least 25 years.



Advantage

1. Optional material: zinc aluminum magnesium and aluminum alloy.
2. Solid structure, strong corrosion resistance.
3. Both the cement foundation and the spiral ground pile are compatible and can be optimized for different terrain, suitable for a variety of uneven ground.
4. Less installation parts, highly pre-assembled, saving construction time.
5. Flexible tilt Angle and ground height design.
6. Lightweight structure with high strength.

Components

 Beam Material: AL6005-T5	 Rail Material: AL6005-T5	 Rail Connector Material: AL6005-T5
 Square Tube 1 Material: AL6005-T5	 H Connector 1 Material: AL6005-T5 SUS304	 H Connector 2 Material: AL6005-T5 SUS304
 Square Tube 2 Material: AL6005-T5	 Base Material: AL6005-T5 SUS304	 Rail Clamp Material: AL6005-T5 SUS304
 Reinforcement Material: AL6005-T5	 Mid Clamp Material: AL6005-T5 SUS304	 End Clamp Material: AL6005-T5 SUS304

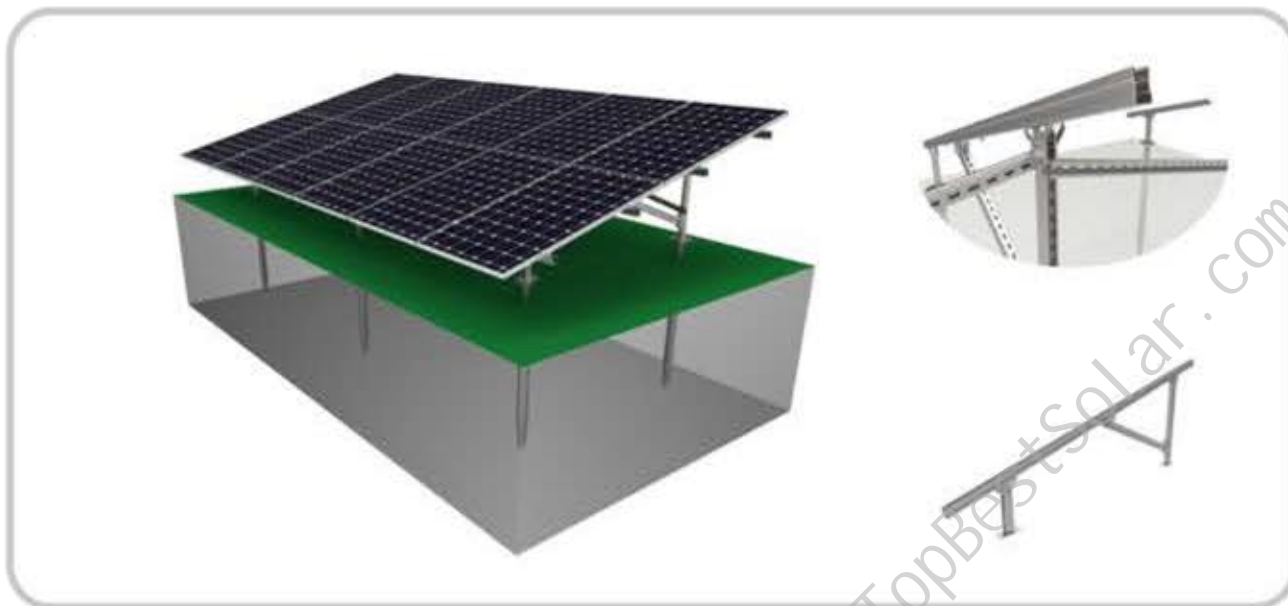
Installation Steps



Rack Type



Ground Mounting System IV - ZAM Steel Mounting Series



Data Sheet

Installation site	Open area	Wind load	60 m/s
Material	S350GD-ZM,SUS304,AL6005-T5	Snow load	3.6 KN / M2
Tilt angle	0-60 degrees	Building height	Up to 20 m
Modules	Frame /Frameless solar module	Standard	AS/NZS1170&DIN1055
Panel array	Customized	Warranty	10 years
Component layout	Landscape,Portrait	Service life	25 years

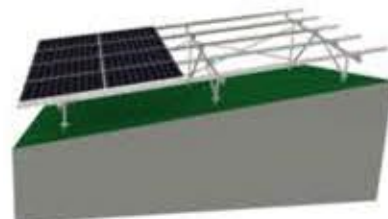
Introduction

Steel solar ground mounting is one of the most economical solutions for photovoltaic ground installation and fixed to the ground in various ways. The simple structural design greatly improves the installation efficiency and reduces the installation cost. At the same time, its hot-dip galvanized surface treatment ensures that the system can be installed in harsh environments. It also has a long service life when installed in harsh environments.

This Steel solar ground mounting is suitable for the installation of large-scale commercial and public utility power plants. It is especially suitable for situations with uneven terrain. The support structure is strong and stable. It is mainly made of carbon steel and has the advantages of high wind speed and heavy snow load. It is unique. The structural design ensures strength while effectively reducing installation time and labor costs, bringing customers a greater return on investment.

Advantage

1. Strong corrosion resistance and high strength ;
2. Foundations are optional: grounding screw or cement block ;
3. Suitable for solar ground support systems of different designs ;
4. Easy installation and great flexibility.



Components



Column

Material: S350-ZM



Rail

Material: S350-ZM



Support Structure

Material: S350-ZM



Bracing

Material: S350-ZM



Connector

Material: S350-ZM



End Clamp

Material: AL6005-T5
SUS304



Mid Clamp

Material: AL6005-T5
SUS304

Installation Steps

1



2



3



4



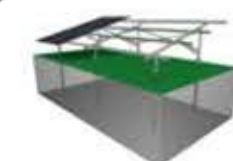
5



6



7

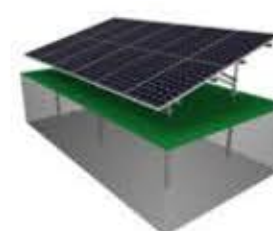


8



Different Types

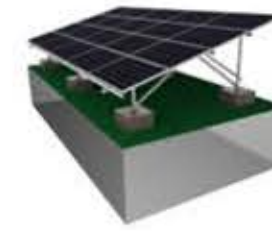
A-type



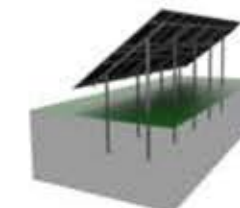
N-type



W-type



H-type



Ground Mounting System IV

- Solar Agriculture Mounting



Data Sheet

Installation site	Open area	Wind load	60 m/s
Material	SUS304,AL6005-T5	Snow load	3.6 KN / M2
Tilt angle	0-30 degrees	Building height	Up to 20 m
Modules	Frame /Frameless solar module	Standard	AS/NZS1170&DIN1055
Panel array	Customized	Warranty	10 years
Component layout	Landscape,Portrait	Service life	25 years

Introduction

Solar Agriculture Mounting widely used in farmland with pile foundation. Solar panels can be arranged at different angles, leaving some gaps on each side of the solar panels to meet the sunlight demand of crops.



Advantage

1. Light transmittance can be adjusted according to demand to meet crop growth.
2. High corrosion resistance, ensure long-term use.
3. Ensure the construction needs of modern agricultural machinery and equipment.
4. The height of the system can be adjusted to adapt to a variety of complex terrain.

Components



Beam

Material: AL6005-T5



Rail

Material: AL6005-T5



Rail Connector

Material: AL6005-T5
SUS304



Square Tube

Material: AL6005-T5



H Connector 1

Material: AL6005-T5
SUS304



H Connector 2

Material: AL6005-T5
SUS304



Base 1

Material: AL6005-T5
SUS304



Base 2

Material: AL6005-T5
SUS304



Rail Clamp

Material: AL6005-T5
SUS304



Top Structure Kits

Material: AL6005-T5
SUS304



End Clamp

Material: AL6005-T5
SUS304

Installation Steps

1



2



3



4



5



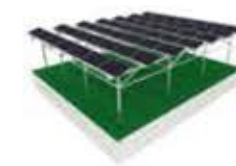
6



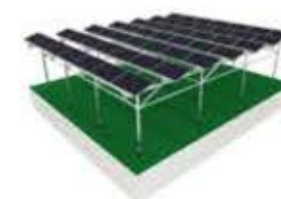
7



8

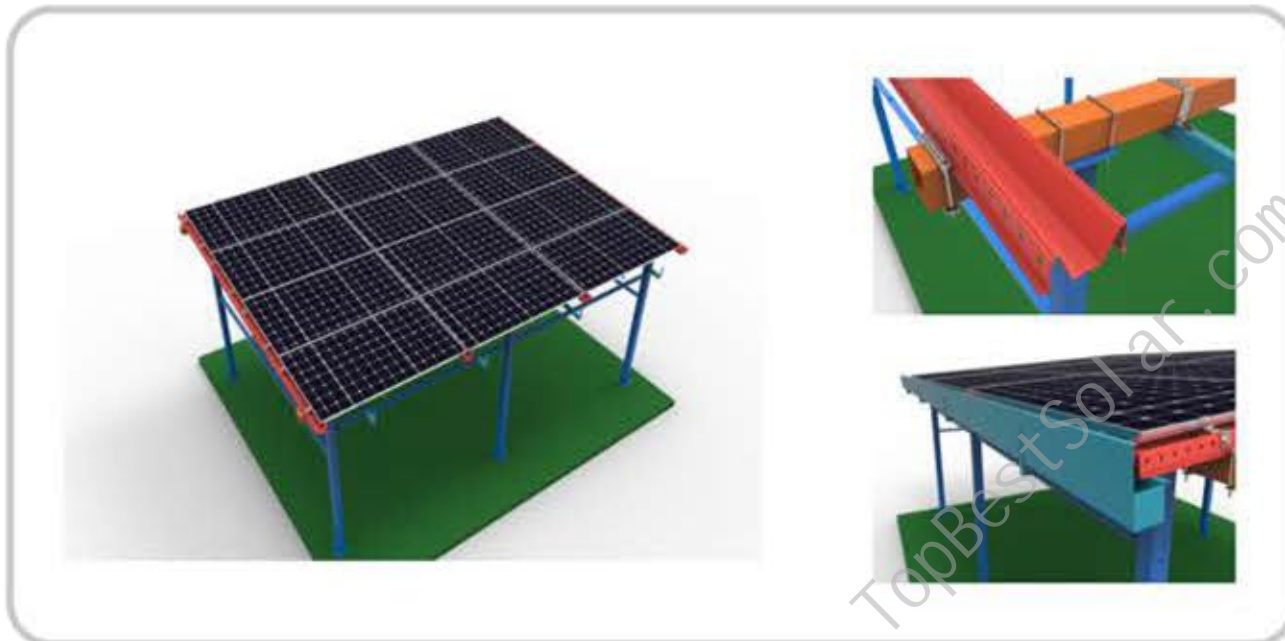


Agriculture Details



Ground Mounting System VI

- Solar Waterproof Pergola Mounting



Data Sheet

Installation site	Open Area	Wind load	60 m/s
Material	SUS304,6005-T5,S350-ZM	Snow load	3.6KN/M2
Tilt angle	0-60 degrees	Building height	Up to 20 m
Modules	Frame /Frameless solar module	Standard	AS/NZS1170&DIN1055
Panel array	Customized	Warranty	10 years
Component layout	Landscape,Portrait	Service life	25 years

Introduction

Solar waterproof pergola is a pergola bracket system specially designed for the ground. Building a pergola on the ground can not only make full use of the ground space to generate electricity, but also can be used to enjoy the shade. It serves multiple purposes.

This Solar waterproof pergola can also be used as a carport. It has multiple functions, good appearance and elegant appearance. The floor provided by our company is made of high-quality zinc, aluminum, magnesium and aluminum alloy, which is anti-corrosion and anti-corrosion.rust, with a service life of more than 25 years.

Advantage

1. It is equivalent to building a "green greenhouse" on the ground, making full use of the.
2. roof space and having a stable structure; strong corrosion resistance.
3. Easy to install; short construction period
4. High cost performance, 10-year warranty
5. Highly waterproof



Components

 M Channel Material: S350-ZM	 U Channel Material: S350-ZM	 Side Channel Material: S350-ZM
 Block kits Material: AL6005-T5 S350-ZM	 Square Tube Material: S350-ZM	 Column Material: S350-ZM
 Mid Clamp Kits Material: AL6005-T5 S350-ZM SUS304	 End Clamp Kits Material: AL6005-T5 S350-ZM SUS304	 Front Channel Material: S350-ZM

Installation Steps



Pergola Type



Ground Mounting System VII

- Oriental Waterproof Solar Gazebo



Data Sheet

Installation site	Oriental waterproof solar gazebo	Wind speed	60m/s
Material	ZAM, AL6005-T5 (Anodized)	Snow load	3.6KN/M2
Tilt angle	0-30°	Building height	Up to 20 m
Modules	Frame /Frameless solar module	Standard	AS/NZS1170&DIN1055
Array	Customized	Warranty	10years
Orientation	Landscape,Portrait	Service life	25 years

Introduction

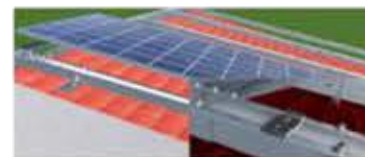
Oriental waterproof solar gazebo, the latest Chinese style design residential solar sun room. It can be installed on the cement flat roof or in the courtyard as a pergola. Add Chinese style grid shape configuration, beautiful appearance. Use a few types of channel, as an upgraded version of the M-type channel, the drainage capacity is increased by 59%, solving the pain point of water leakage in operation and maintenance. The welding of this system reduces the use of bolt fixing methods and improves construction efficiency.

The Chinese style waterproof solar room provided by our company uses high quality zinc-aluminum-magnesium and aluminum alloys, which are anti-corrosion and rust-proof, with a service life of more than 25 years



Advantage

1. Faster installation - bolt fixing, improve construction efficiency.
2. Better waterproofing - drainage volume increased by 59%, solving the pain point of water leakage in operation and maintenance.
3. More cost-saving - with the same strength performance, the cost is reduced by at least 15%.
4. Beautiful appearance - add national style grid configuration.
5. The national style material adopts electrostatic spraying technology, has stable and reliable adhesion, and is more durable.



Components



Column

Material: S350-ZM



Square Tube

Material: S350-ZM



Portrait Channel

Material: S350-ZM



Landscape Channel

Material: S350-ZM



Edge Sink Fixings

Material: S350-ZM



Channel Clamp

Material: S350-ZM



Channel Connector

Material: S350-ZM



Decorations

Material: S350-ZM



Corner

Material: S350-ZM

Installation Steps

1



2



3



4



5



6



7



8



9





SOLAR CARPORT

SOLAR ENERGY



Carport Mounting System I

- Standard Carport Series



Data Sheet

Installation site	Open area	Wind load	60 m/s
Material	SUS304,AL6063-T5/6005-T5	Snow load	3.6KN/M2
Tilt angle	0-60 degrees	Building height	Up to 20 m
Modules	Frame/ Frameless solar module	Standard	AS/NZS1170&DIN1055
Panel array	Customized	Warranty	10 years
Component layout	Landscape,Portrait	Service life	25 years

Introduction

This solar carport system is designed with high strength aluminum alloy to ensure its safety, this aluminum carport mounting system is suitable for most photovoltaic modules on the market, only available in solar panel specifications, using space and sunlight to convert into electricity, they can be used for lighting or car AC charging...

Advantage

1. High pre-assembly , easy installation and reduces labor costs.
2. The height and Angle can be adjusted.
3. Light material, easy to transport and install.
4. The layout of the system can be adjusted according to the actual situation on site.



Components



Rail
Material: AL6005-T5



Rail Connector
Material: AL6005-T5



Beam
Material: AL6005-T5



Square Tube
Material: AL6005-T5



Base
Material: AL6005-T5
SUS304



H Connector 1
Material: AL6005-T5
SUS304



Rail Clamp
Material: AL6005-T5
SUS304



Mid Clamp
Material: AL6005-T5
SUS304



End Clamp
Material: AL6005-T5
SUS304

Installation Steps

1



2



3



4



5



6



7



8

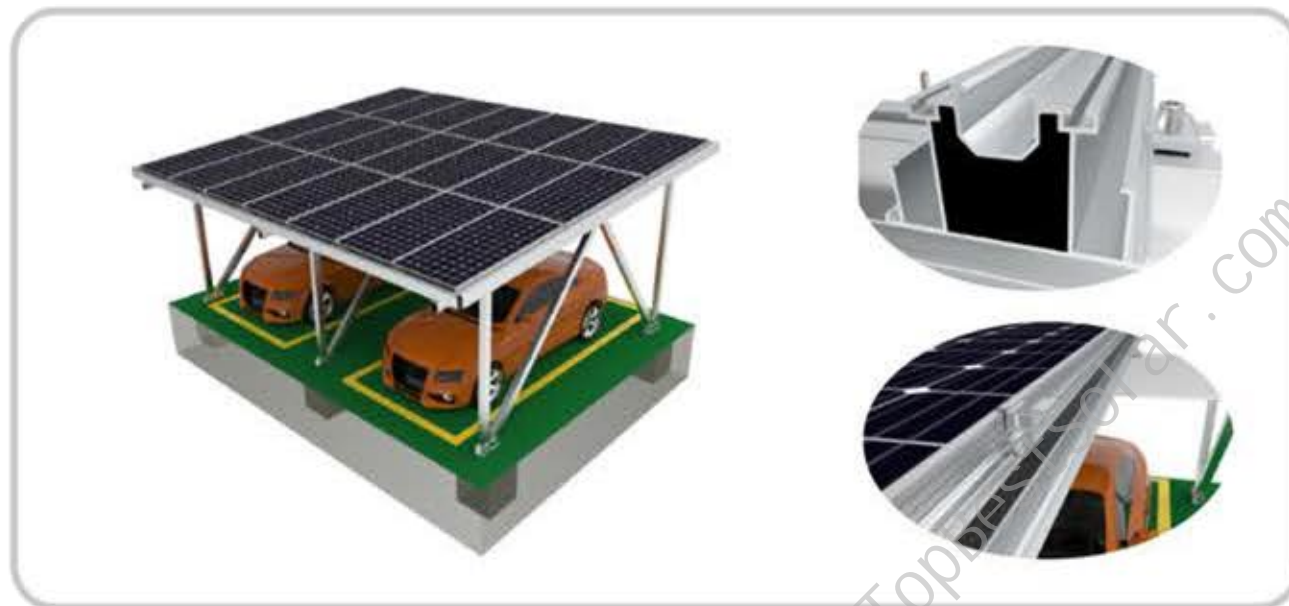


Rack Type



Carport Mounting System II

- Aluminum Waterproof Series



Data Sheet

Installation site	Open area	Wind speed	60m/s
Material	SUS304, AL6005-T5 (Anodized)	Snow load	3.6KN/M2
Tilt angle	0-30°	Building height	Up to 20 m
Modules	Frame/ Frameless solar module	Standard	AS/NZS1170&DIN1055
Array	Customized	Warranty	10years
Orientation	Landscape,Portrait	Service life	25 years

Introduction

This solar waterproof carport system is designed with high-strength aluminum alloy to ensure its safety while providing easy installation and beautiful appearance. The special structural design maximizes the space. Two cars are used as a unit or freely combined according to requirements. Waterproof design, 10-year warranty.

Advantage

1. Highly pre-assembled to ensure easy installation and reduce labor costs.
2. The height and angle can be adjusted within a certain range.
3. Light material, easy to transport and install.
4. The layout of the system can be adjust according to the actual situation on site.



Components



Water Channel
Material: AL6005-T5



Rail
Material: AL6005-T5



Rail Connector
Material: AL6005-T5



Beam
Material: AL6005-T5



Square Tube
Material: AL6005-T5



H Connector 1
Material: AL6005-T5
SUS304



H Connector 2
Material: AL6005-T5
SUS304



Base
Material: AL6005-T5



Rail Clamp
Material: AL6005-T5
SUS304



Cover
Material: AL6005-T5

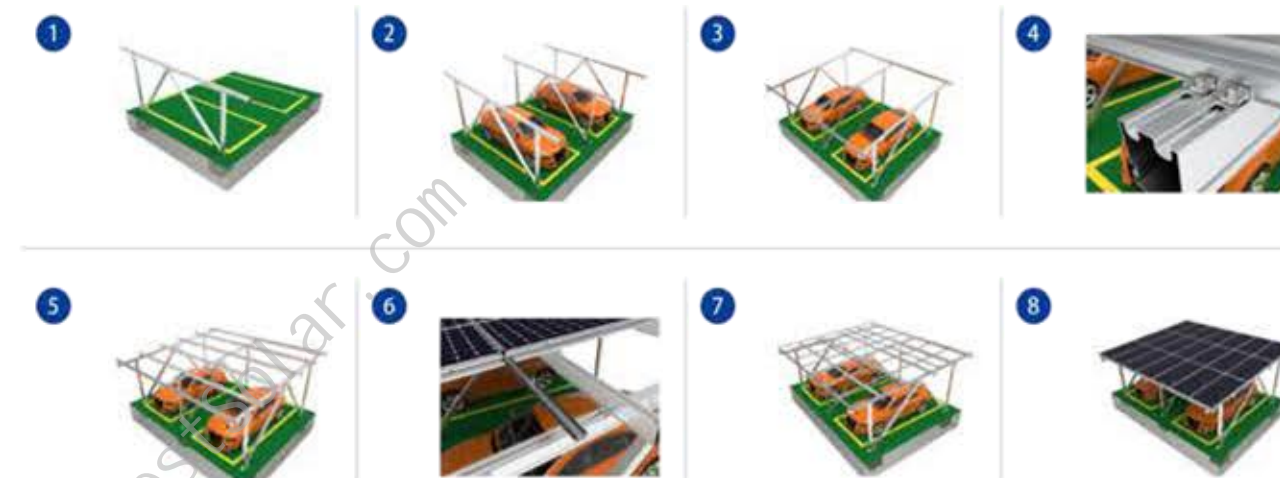


Mid Clamp
Material: AL6005-T5
SUS304



End Clamp
Material: AL6005-T5
SUS304

Installation Steps



Application

No hemming



Full hemming



Carport Mounting System III

- ZAM Waterproof Series A



Data Sheet

Installation site	Open area	Wind load	60 m/s
Material	SUS304,AL6063-T5/6005-T5	Snow load	3.6KN/M2
Tilt angle	5-15°	Building height	Up to 20 m
Modules	Frame/ Frameless solar module	Standard	AS/NZS1170&DIN1055
Panel array	Customized	Warranty	10 years
Component layout	Landscape,Portrait	Service life	25 years

Introduction

Steel Solar waterproof carport system is a new waterproof parking lot solution with good waterproof function.

This design provides protection from sun and rain while being cost-effective and can provide power not only to charging stations, but also to nearby businesses, homes or public spaces.



Advantage

1. High waterproof performance structural waterproofing.
2. Design according to the site and rationally utilize the area.
3. Can be customized to meet customer requirements.
4. Stable and strong to withstand high wind speeds and snow loads.



Components



Column

Material: Q235B



Beam

Material: Q235B



M Channel

Material: S350-ZM



Block Kits

Material: S350-ZM



Purlins

Material: Q235B



U Channel

Material: S350-ZM



Anchor Bolt

Material: Q235B



Mid Clamp Kits

Material: AL6005-T5
S350-ZM
SUS304



End Clamp Kits

Material: AL6005-T5
S350-ZM
SUS304

Installation Steps

1



2



3



4



5



6



7



8



9



Carport Mounting System III

- ZAM Waterproof Series B



Data Sheet

Installation site	Open area	Wind load	60 m/s
Material	SUS304,AL6063-T5/6005-T5	Snow load	3.6KN/M2
Tilt angle	5-15°	Building height	Up to 20 m
Modules	Frame/ Frameless solar module	Standard	AS/NZS1170&DIN1055
Panel array	Customized	Warranty	10 years
Component layout	Landscape,Portrait	Service life	25 years

Introduction

Steel Solar waterproof carport system is a new waterproof parking lot solution with good waterproof function.

This design provides protection from sun and rain while being cost-effective and can provide power not only to charging stations, but also to nearby businesses, homes or public spaces.












Advantage

1. High waterproof performance structural waterproofing.
2. Design according to the site and rationally utilize the area.
3. Can be customized to meet customer requirements.
4. Stable and strong to withstand high wind speeds and snow loads.



Components

 Column Material: Q235B	 Beam Material: Q235B	 M Channel Material: S350-ZM
 Block Kits Material: S350-ZM	 Purlins Material: Q235B	 U Channel Material: S350-ZM
 Anchor Bolt Material: Q235B	 Mid Clamp Kits Material: AL6005-T5 S350-ZM SUS304	 End Clamp Kits Material: AL6005-T5 S350-ZM SUS304

Installation Steps



Carport Mounting System V

- New Solar Waterproof Carport System



Data Sheet

Installation site	Open area	Wind load	60 m/s
Material	S350-ZM/Q235/AL6005-T5	Snow load	3.6KN/M2
Tilt angle	5-15°	Building height	Up to 20 m
Modules	Frame/ Frameless solar module	Standard	AS/NZS1170&DIN1055
Panel array	Customized	Warranty	10 years
Component layout	Landscape, Portrait	Service life	25 years

Introduction

The Solar Waterproof Carport System is designed to be waterproof and suitable for both residential and commercial use. All components are pre-assembled at the factory to ensure a quick and cost-effective installation. The waterproof solar carport features specialized waterproof components that effectively drain rainwater, providing excellent protection against the rain and water leakage.



Advantage

1. Optimal compatibility: Designed to be compatible with most commercial-grade photovoltaic components.
2. Waterproof Design: Constructed with waterproof materials and features, including sealed joints and drainage systems, to prevent water ingress and damage.
3. Durable Construction: Made from high-quality materials and designed to withstand various weather conditions, including rain, snow, and wind.
4. Vehicle Protection: Shields vehicles from rain, snow, hail, and UV rays, prolonging their lifespan and maintaining their appearance.



Components



Column

Material: S350-ZM



Cross Beam

Material: S350-ZM



Longitudinal Beam

Material: S350-ZM



Block Kits

Material: S350-ZM



M Rail

Material: S350-ZM



U Channel

Material: S350-ZM



Anchor Bolt

Material: Q235B



Mid Clamp Kits

Material: AL6005-T5
S350-ZM
SUS304



End Clamp Kits

Material: AL6005-T5
S350-ZM
SUS304

Installation Steps

1



2



3



4



5



6



7



8



Solar Panel Snow Guards



Data Sheet

Installation site	Roof	Wind load	60 m/s
Material	S350-ZM	Snow load	3.6 KN / M2
Standard	AS/NZS1170&DIN1055	Building height	Up to 20 m
Warranty	10 years	Service life	25 years

Introduction

Solar panel snow guards are devices designed to prevent snow and ice from sliding off solar panels in winter conditions. They help maintain safety by minimizing the risk of snow avalanching onto people or property below.

The snow guards are essential for maintaining safety and efficiency in solar installations in snowy regions. By preventing snow and ice from sliding off, these devices protect both the solar panels and the people or structures below. As more homeowners and businesses adopt solar energy, incorporating snow guards will become increasingly important in regions prone to winter weather.



Advantage

- 1. Safety:**
Prevents heavy snow and ice from sliding off suddenly, reducing the risk of injury or damage to property.
- 2. Protection for Panels:**
Helps maintain the integrity of solar panels by preventing excessive weight from accumulating on them.
- 3. Enhanced Efficiency:**
Keeps solar panels clear from snow buildup, ensuring they can capture maximum sunlight and operate efficiently.



Components



Hook

Material: S350-ZM



Snow Guards

Material: S350-ZM



Bolt

Material: SUS304



Nut

Material: SUS304

Installation Steps

1



2



3



4



5



Snow Guards Type



Solar Panel Snow Clips



Data Sheet

Installation site	Solar project in snowy areas	Warranty	10 years
Material	AL6005-T5	Service life	25 years
Tilt angle	0-60 degrees	Building height	Up to 20 m
Modules	Frame solar module	Component layout	Landscape, Portrait

Introduction

Solar snow clips are designed for solar systems in areas with harsh winter climates and can be easily installed on existing photovoltaic panels. Their main function is to prevent snow from covering solar panels, and to play the role of snow blocks and snow blocks on photovoltaic modules to ensure that solar panels can fully absorb sunlight, maintain the normal operation of the system, and prevent the safety hazards caused by snow sliding off photovoltaic panels.

Solar panel snow clip manufacturers strictly select aluminum alloy materials in the production process, with excellent workmanship and anodized surface treatment, which can withstand extreme climatic conditions. Various specifications can support 30mm, 35mm, 40mm solar panels.

Advantage

1. High-quality aluminum alloy, corrosion-resistant.
2. Easy to install and easy to operate.
3. Effective in cutting snow blocks.
4. Large inventory.

Components



Solar Snow Clips

Material: AL6005-T5



Bolt

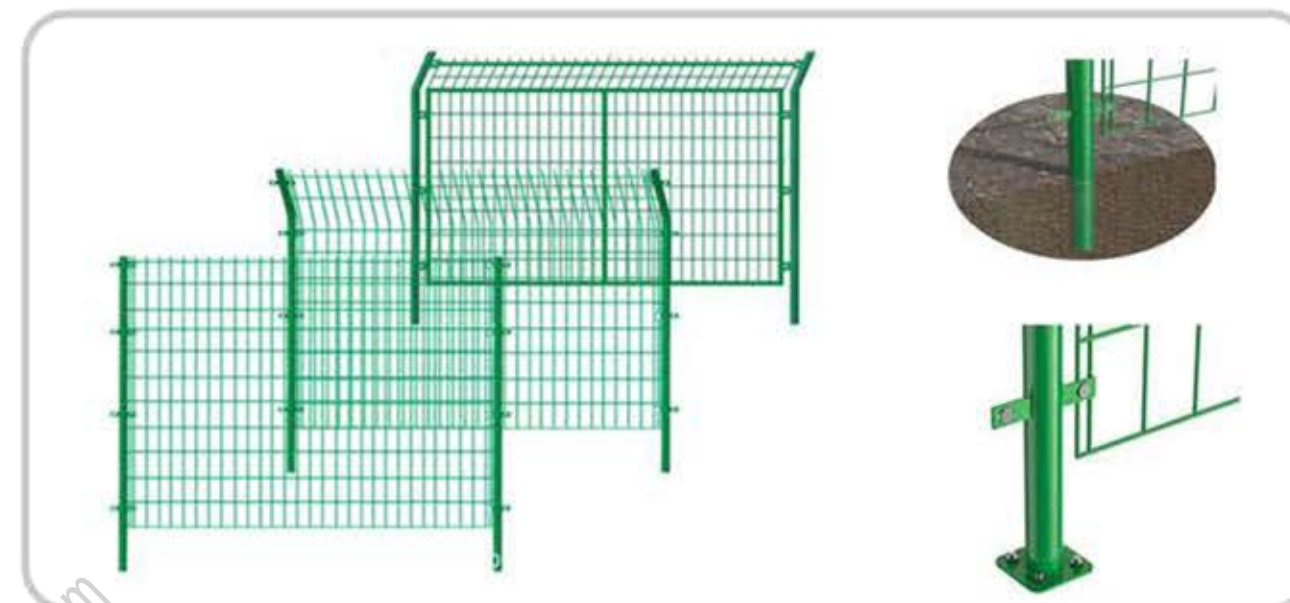
Material: SUS304



Disc Washer

Material: SUS304

Solar Fence Series



Data Sheet

Installation site	Solar project	Warranty	10 years
Material	Q235/Q195	Service life	25 years
Height	1.2m, 1.5m, 1.8m	Length	2m
Wire diameter	3mm, 3.5mm	Grid size	50*100mm, 100*100mm

Introduction

Solar fence can provide protection for the solar system, and the general ground solar system will be equipped with a protective fence.

Fence can be mounted on two different foundation: Concrete foundation and Screw foundation. Solar fence is made by the surface treatment: plastic dipping with great quality.

The surface treatment of fence is plastic dipping, high corrosion resistance guarantees the maximum possible lifespan and is also completely recyclable.

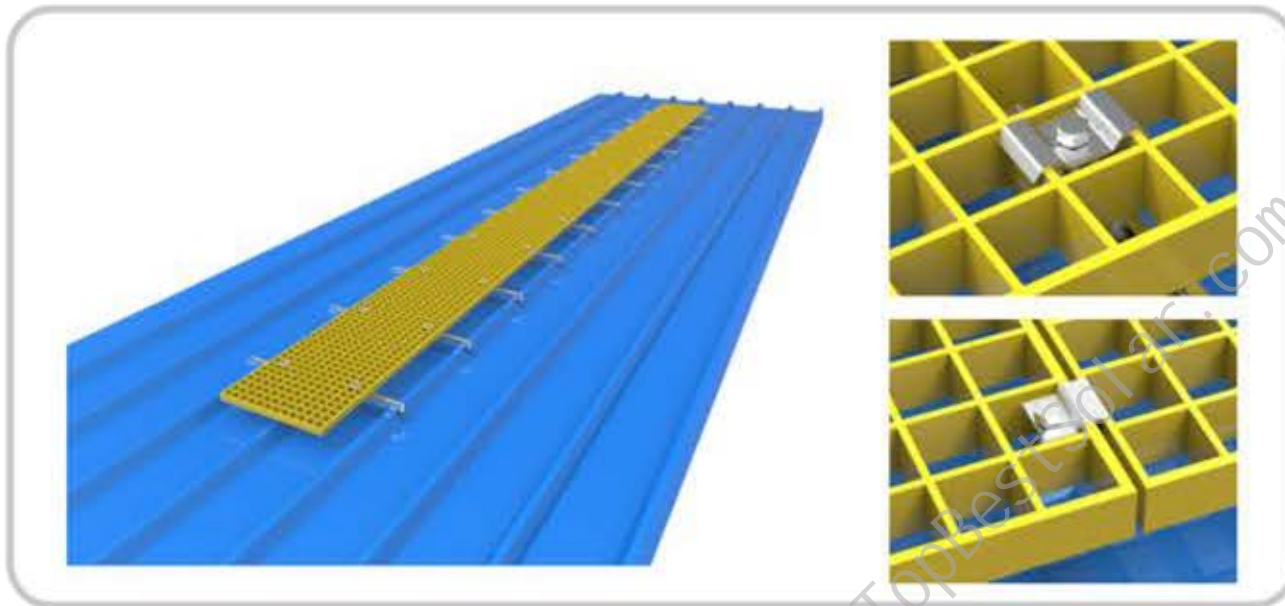
Advantage

1. Solar Coated Fences are widely used in Solar Park, Farm, Park and Highway, etc.
2. Easy & quick installation.
3. Few components and no more than two kinds of tools in whole system fixation
4. All solar Fencing mounts components are made with high quality HDG Q235.

Application Display



Solar FRP Walkway



Data Sheet

Installation site	Metal roof	Warranty	3 years
Material	FRP, Stainless steel	Service life	10 years
Grid size	38*38mm、45*45mm、50*50mm	Colour	Yellow, Green, Gray
Height	25mm, 30mm, 35mm	Length	3000mm (Customizable)

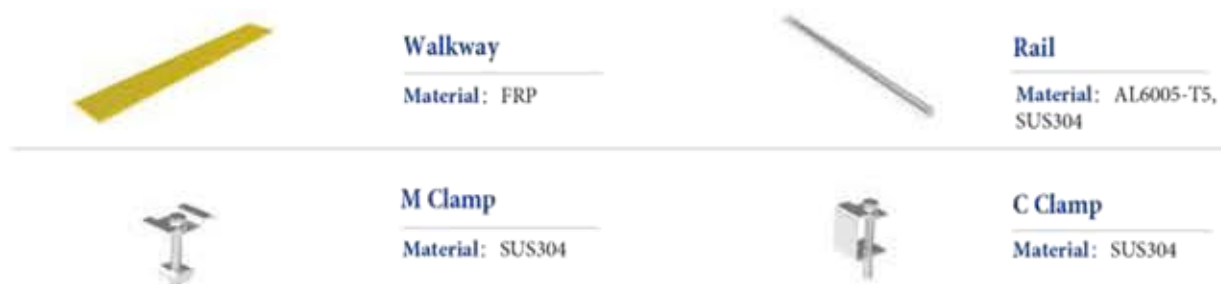
Introduction

Solar FRP Walkway manufactured from high-quality raw materials that are tested on various quality parameters under the strict observation of our well-educated and experienced professionals. The supplied walkway arrays are designed for safe and controlled access. The system provides non-slip, safe and all-weather access for maintenance of solar panels and frequently accessed areas without causing unnecessary damage to the roof. Our company is the undisputed leader in the solar industry in the manufacture and supply of FRP Molded Grating Walkways which are mainly used to make decking, flooring and walkways. In fact, our company has become very popular after offering the best solar products in the market. Advantages

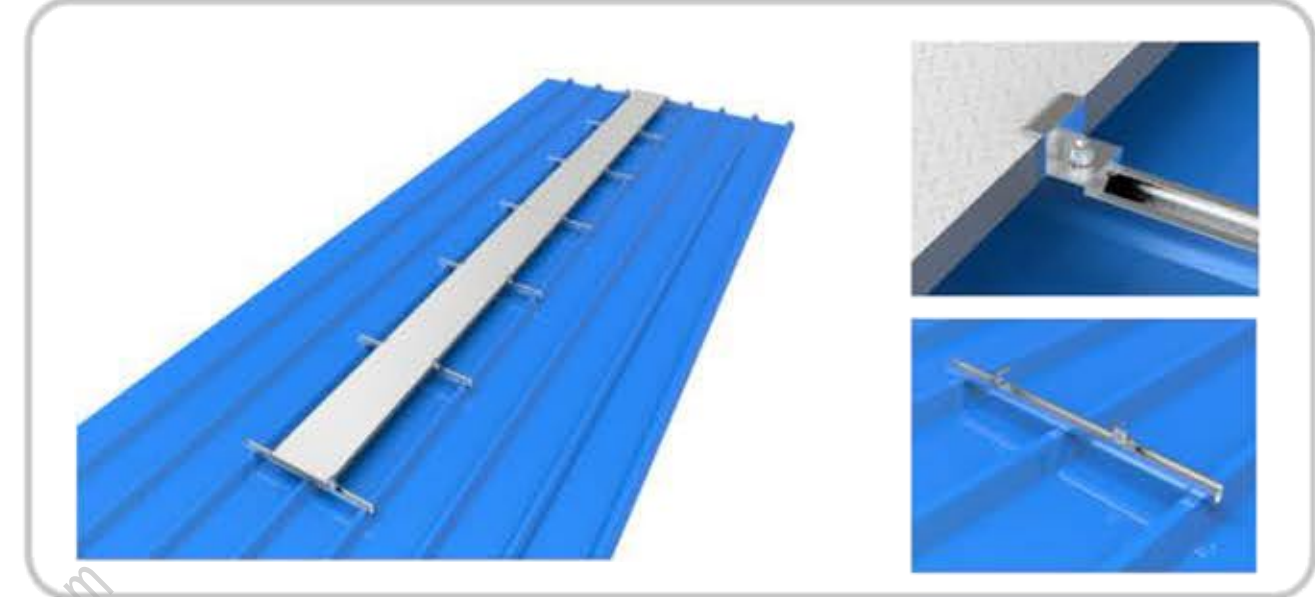
Advantage

1. Corrosion resistance
2. Light weight and high strength
3. Anti-aging
4. Easy maintenance
5. Excellent electromagnetic properties
6. Excellent insulation performance

Components



Solar Steel Walkway



Data Sheet

Installation site	Metal roof	Warranty	10 years
Material	S350-ZM	Service life	25 years
Thickness	1mm, 1.4mm	Width	400mm, 500mm (Customizable)
Height	30mm, 35mm	Length	3000mm (Customizable)

Introduction

Anti-slip steel solar walkway is a steel plate with a pattern design. The surface is non-slip and beautiful, with high strength and good corrosion resistance. Used for roof photovoltaic maintenance channel walkway, roof maintenance pedal.

From the design concept, we took into account the anti-slip property of the photovoltaic walkway board surface and adopted the pattern design and shape and angle changes to improve the convenience, speed and beauty in construction. There are two optional ridge pedals and operation and maintenance pedals, and they can be customized according to drawings.

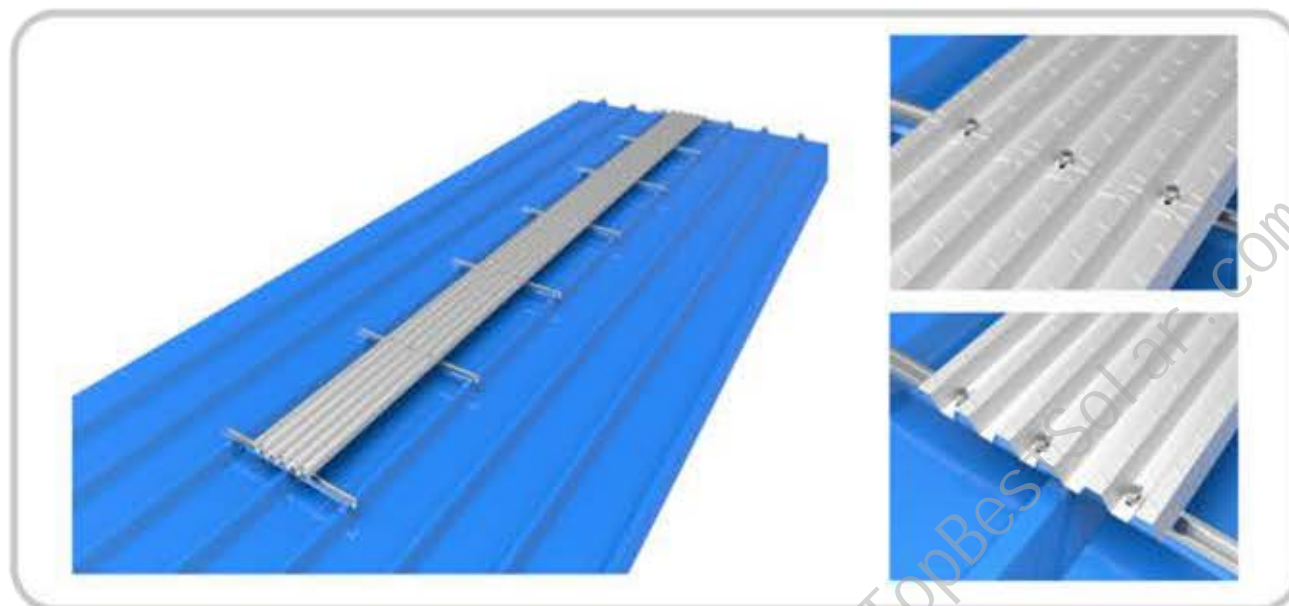
Advantage

1. Anti-slip and beautiful, high strength.
2. Good corrosion resistance and long service life.
3. Easy to install and assemble.

Components



Solar Steel Walkway



Data Sheet

Installation site	Metal roof	Warranty	10 years
Material	S350-ZM	Service life	25 years
Thickness	1mm, 1.4mm	Width	400mm, 500mm
Height	20mm, 30mm	Length	3000mm (Customizable)

Introduction

Anti-slip steel solar walkway is a steel plate with a pattern design. The surface is non-slip and beautiful, with high strength and good corrosion resistance. Used for roof photovoltaic maintenance channel walkway, roof maintenance pedal.

From the design concept, we took into account the anti-slip property of the photovoltaic walkway board surface and adopted the pattern design and shape and angle changes to improve the convenience, speed and beauty in construction. There are two optional ridge pedals and operation and maintenance pedals, and they can be customized according to drawings.

Advantage

1. Anti-slip and beautiful, high strength.
2. Good corrosion resistance and long service life.
3. Easy to install and assemble.

Components



Walkway

Material: S350-ZM



Rail

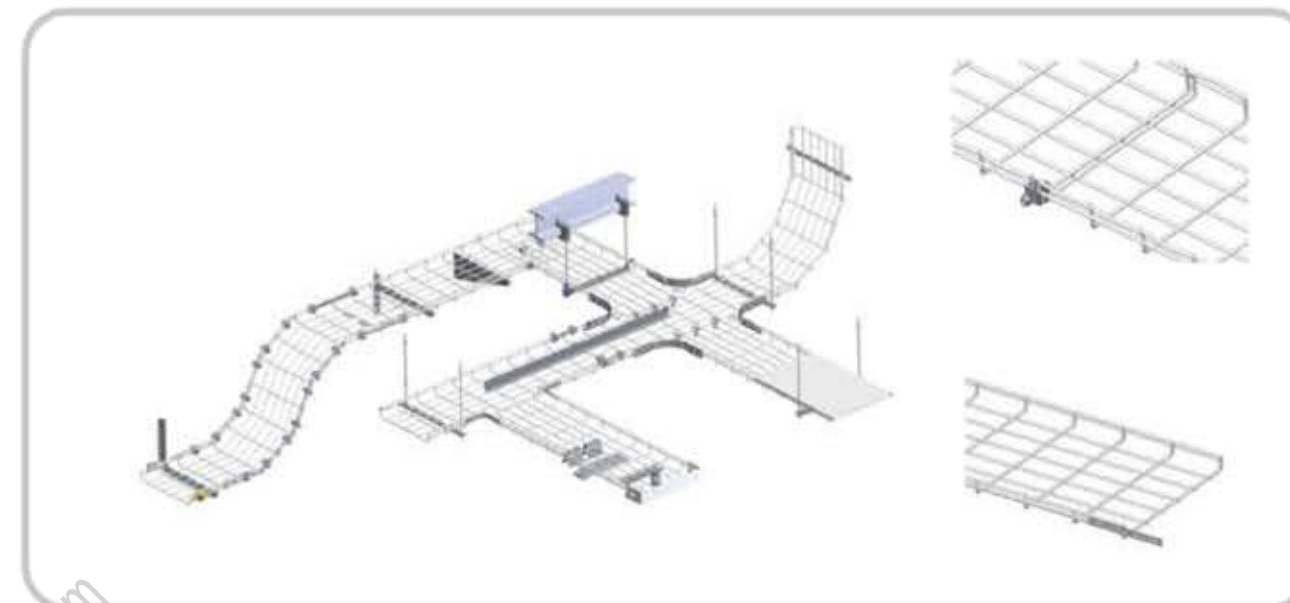
Material: AL6005-T5



Clamp

Material: AL6005-T5, SUS304

Cable Tray System



Data Sheet

Installation site	Metal roof	Warranty	10 years
Material	Q235	Service life	25 years
Width	50-600mm	Wire diameter	0.8, 1mm
Height	50, 100, 150mm	Length	3000mm (Customizable)

Introduction

Our grid solar cable tray system and solar cable support system provide cable support, cable protection and wire management, designed for utility solar installation applications. The solar cable tray is made of high-grade hot-dip galvanized steel. The open cable tray system allows installers to lay wires. No pulling, no threading. Can be quickly and easily interlocked together.

Advantage

1. Low cost, significant cost savings compared to standard traditional tray products.
2. Light weight and a wide range of sizes.
3. Fast heat dissipation.
4. Flexible, simple and fast installation. Design allows cables to enter and exit at any location.
5. Easy line inspection and cleaning, easy to maintain.

Components



Cable Tray

Material: Q235



Rail

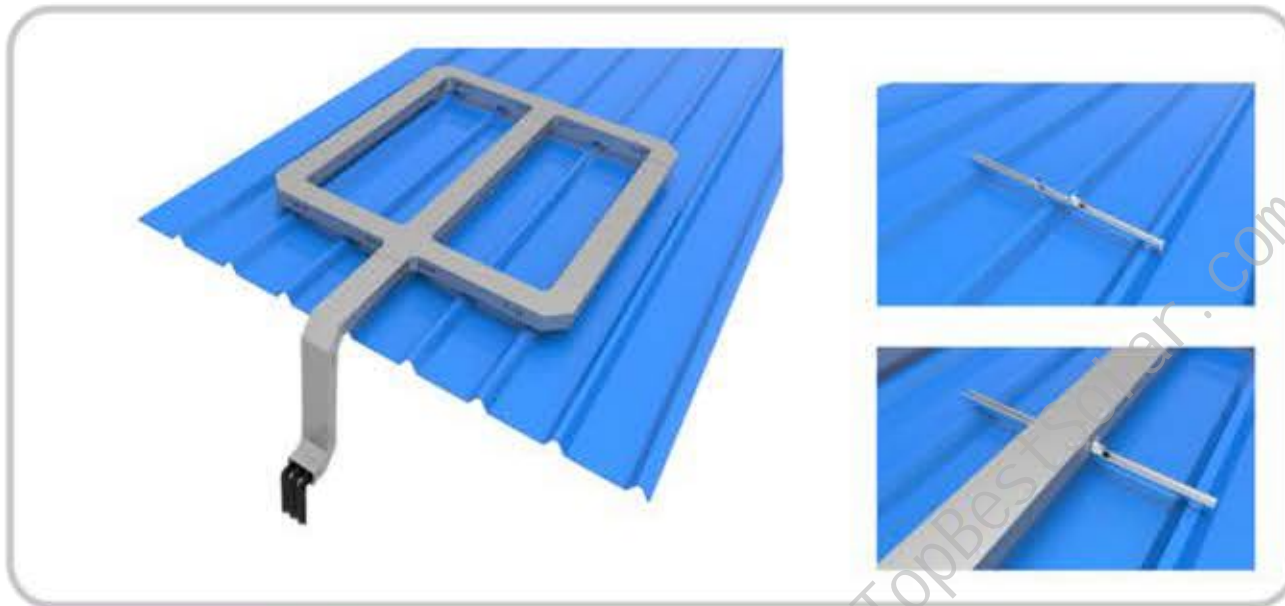
Material: AL6005-T5



Clamp

Material: AL6005-T5, SUS304

Steel Cable Tray



Data Sheet

Installation site	Solar project	Warranty	10 years
Material	ZAM	Service life	25 years
Width	50-1200mm	Height	50-200mm
Thickness	1mm	Length	2000-6000mm (Customizable)

Introduction

The Cable Tray was designed for information and energy cables for solar PV systems. Providing cable support, cable protection, and wire management. Our solar cable tray systems and solar cable support systems are engineered for utility solar mounting applications. The Solar cable tray are made of High Grade galvanized steel, stainless steel & ZAM steel.

Open cable tray system allows installers to lay in wires. No pulling, no threading. Reliable and durable design resists damage from harsh environments and UV light. The Solar cable tray is comprised of three main components that quickly and conveniently interlock together. The top cover feature allows you to lay wires into the cable tray. When wiring is complete, simply snap the cover to the tray.

Advantage

1. Low cost, significant cost savings compared to standard traditional tray products.
2. Light in weight, wide range of sizes.
3. Fast heat dispersion.
4. Strong enough to withstand short circuits. Provides strength, rigidity without additional hardware.
5. Adapts to difficult architectural designs to accommodate changes in direction and elevation of cable runs.
6. Flexible, easy and fast installation. Design allows cable exit or entry at any point.
7. Cables can be secured to clamps or ties.
8. Various hardware accessories available to fix, support and install.
9. Safe smooth edge design to protect cable.
10. Easy for line check and cleaning, easy maintained.

Components



Cable Tray
Material: ZAM



Elbow 90°
Material: ZAM



Tee
Material: ZAM



Cross
Material: ZAM

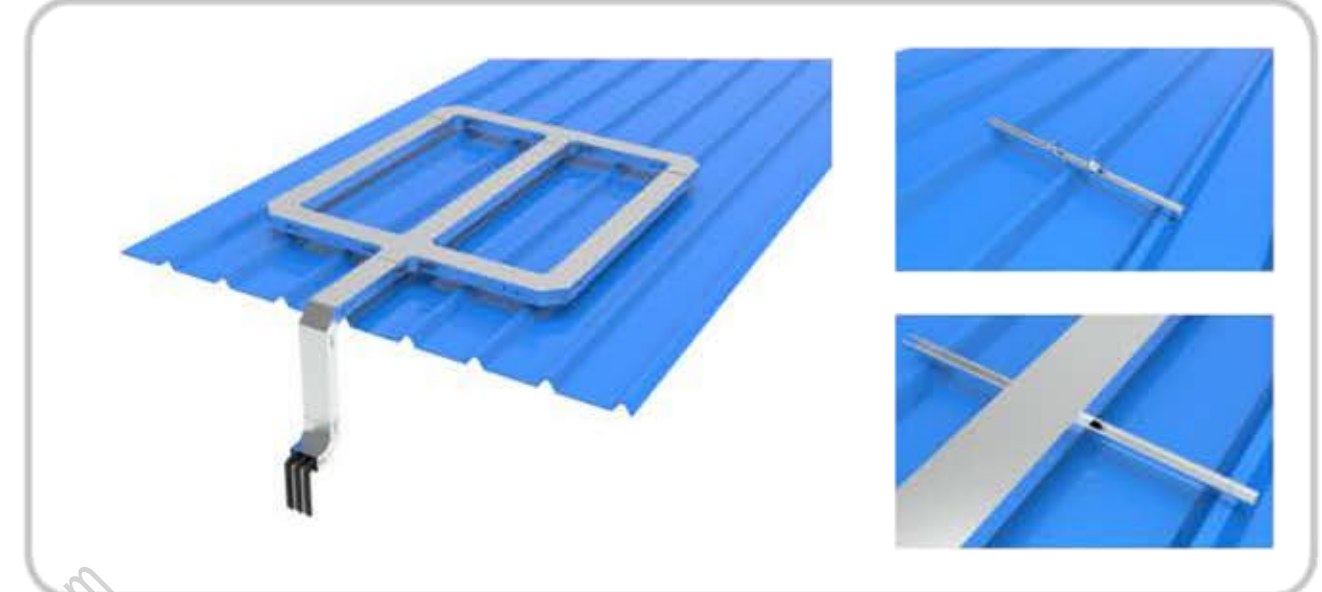


Inside Riser
Material: ZAM



Bolts
Material: SUS304

Aluminum Cable Tray



Data Sheet

Installation site	Solar project	Warranty	10 years
Material	Aluminium alloy	Service life	25 years
Width	50-1200mm	Height	50-200mm
Thickness	1mm	Length	2000-6000mm (Customizable)

Introduction

The solar cable tray is made of aluminum alloy material. The open cable tray system allows installers to lay wires. No pulling, no threading. Made of high-quality aluminum alloy, well-made, anodized surface, reliable and durable material to resist damage from harsh environment and UV rays.

Advantage

1. High cost performance and long service life.
2. Light weight and wide range of use.
3. Flexible, simple and fast installation. The design allows cables to enter and exit at any position.
4. Strong enough to withstand short circuits. Provides strength and rigidity without additional hardware.
5. Adapts to complex building designs to accommodate changes in cable direction and height.
6. Flexible, simple and fast installation. The design allows cables to enter and exit at any position.
7. Easy line inspection and cleaning, easy to maintain.

Components



Cable Tray
Material: Aluminium alloy



Elbow 90°
Material: Aluminium alloy



Tee
Material: Aluminium alloy



Cross
Material: Aluminium alloy



Inside Riser
Material: Aluminium alloy



Bolts
Material: SUS304

Fence Solar Mounting System



Data Sheet

Installation site	Fence	Wind load	40 m/s
Material	SUS304,AL6063-T5/6005-T5	Snow load	3.6 KN / M2
Tilt angle	90 degrees	Building height	Up to 20 m
Modules	Frame solar module	Standard	AS/NZS1170&DIN1055
Panel array	Customized	Warranty	10 years
Component layout	Landscape,Portrait	Service life	25 years

Introduction

Explore a new way to obtain solar power fence mounting system, with less usage of land area to generate more electricity.

Fence Solar Mounting System offer an efficient and innovative way to harness solar energy while utilizing existing structures. With their ability to capture sunlight on both sides, these systems maximize energy production and provide a space-efficient solution for residential, commercial, and agricultural applications. Proper installation and maintenance ensure optimal performance and longevity of the solar energy system.

Advantage

1. Different cross sections be designed to ensure the stability of the structure according to the snow load conditions at different locations.
2. Optimize the connection of each part, simplify the installation, and save installing time.
3. Quick Installation: optimize the connection of each part, simplify the installation, and save installing time. Optional Foundation, Ground screw or concrete block foundation are optional.
4. Stable Vertical Structure: different cross sections be designed to ensure the stability of the structure according to the snow load conditions at different locations.

Components



Fence Pipe

Material: AL6005-T5



Guard Board

Material: AL6005-T5



Solar Panel Fixing Strip

Material: AL6005-T5



Solar Panel Frame Strip

Material: AL6005-T5



Fence Pipe Side Cover

Material: AL6005-T5



Fence Pipe Top Cover

Material: PP



M6*40 Bolt

Material: SUS304

Installation Steps

1



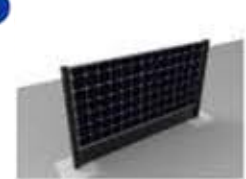
2



3



4



5



6



Balcony Type



Solar Rail Series



H Rail 42

Material: AL6005-T5



Rail 46A

Material: AL6005-T5



Rail 46B

Material: AL6005-T5



Rail 40x30

Material: AL6005-T5



Rail 40X40

Material: AL6005-T5



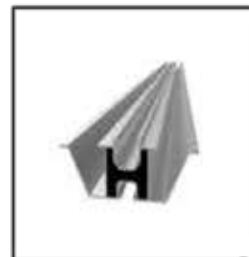
Mini Rail

Material: AL6005-T5



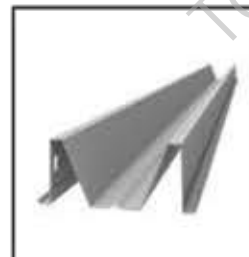
U Rail 31 x 60

Material: AL6005-T5



W Channel

Material: AL6005-T5



M Channel

Material: ZAM



C Rail

Material: ZAM



U Rail

Material: ZAM



ZAM Steel Rail

Material: ZAM

Solar Ground Foundation Series



Ground Screw - 1

Material: Q235B(HDG)



Ground Pile Foundation 1

Material: Q235B(HDG)



Ground Screw Foundation 1

Material: Q235B(HDG)



Ground Screw Foundation 2

Material: Q235B(HDG)



Ground Screw Foundation 3

Material: Q235B(HDG)



Solar Cement Block

SOLAR ROOF MOUNTING SYSTEM PROJECTS



SOLAR ENERGY

SOLAR GROUND MOUNTING SYSTEM PROJECTS



SOLAR CARPORT SYSTEM PROJECTS

